



Submittal Data Sheet

2.5-Ton, Heat Pump, SkyAir ODU

RZQ30TBVJUA

FEATURES

- 10 year limited parts and compressor warranty

BENEFITS

- Inverter technology delivers precise temperature control and superior energy efficiency

INDOOR UNIT



OUTDOOR UNIT





Submittal Data Sheet

2.5-Ton, Heat Pump, SkyAir ODU

RZQ30TBVJUA

SYSTEM PERFORMANCE

Rated Cooling Capacity (Btu/hr):	Rated Cooling Conditions:	Indoor (°F DB/WB): 80 / 67 Ambient (°F DB/WB): 95 /
Sensible Capacity (Btu/hr):	Rated Piping Length(ft):	25
Max/Min Cooling Capacity (Btu/hr): /	Rated Height Difference (ft):	0.00
Cooling Input Power (kW):		
	Rated Heating Conditions:	Indoor (°F DB/WB): 70 / 60 Ambient (°F DB/WB): 47 / 43

SYSTEM DETAILS

Refrigerant Type:	R-410A	Cooling Operation Range (°F DB):	23 - 122
Holding Refrigerant Charge (lbs):	7.9	Heating Operation Range (°F WB):	-4 - 60
Additional Charge (lb/ft):	0.58	Max. Pipe Length (Vertical) (ft):	98
Pre-charge Piping (Length) (ft):	25	Cooling Range w/Baffle (°F DB):	-
Max. Pipe Length (Total) (ft):	230		
Max Height Separation (Ind to Ind ft):	0		

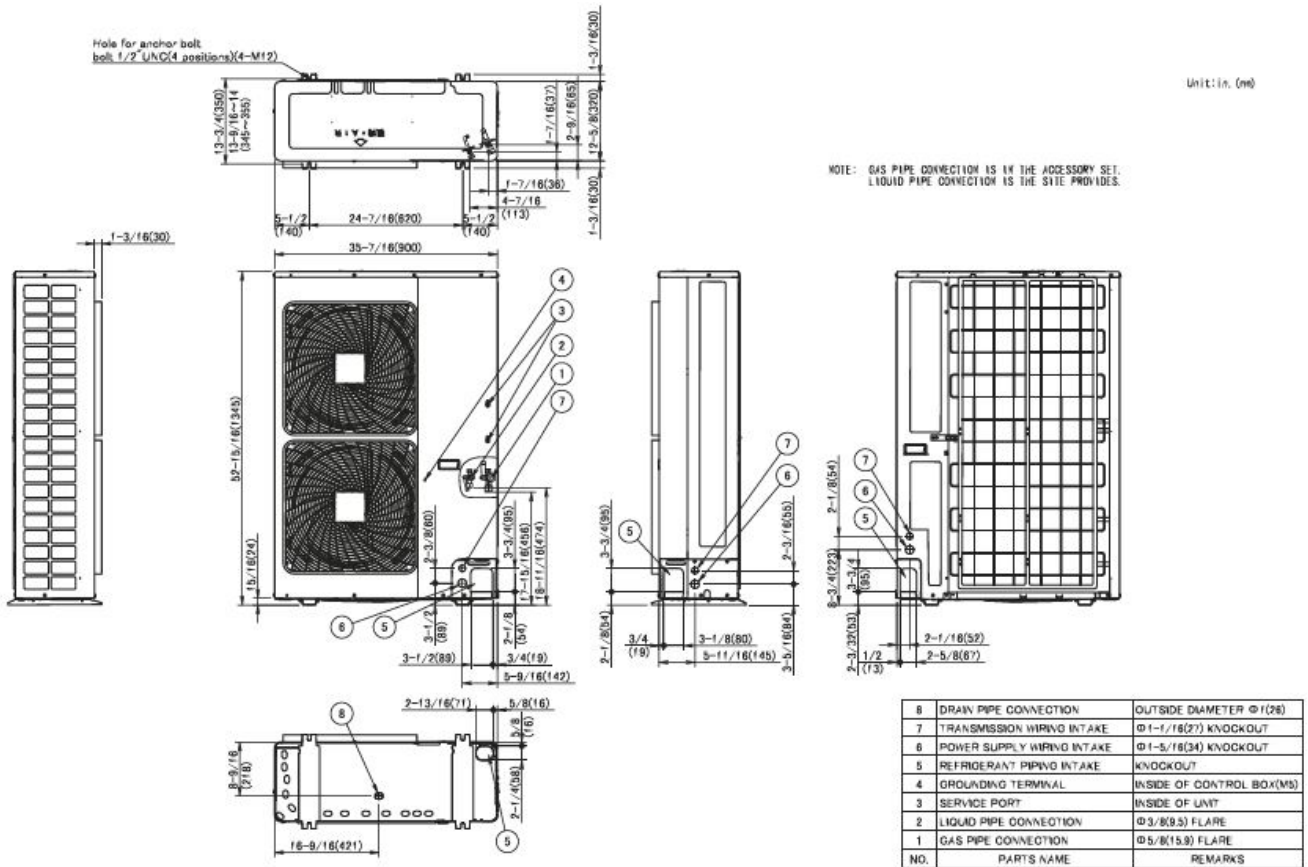
Submittal Data Sheet

2.5-Ton, Heat Pump, SkyAir ODU
RZQ30TBVJUA

INDOOR UNIT DETAILS

Power Supply (V/Hz/Ph):	208-230 / 60 / 1	Airflow Rate (H) (CFM):	3741
Power Supply Connections:	L1, L2, Ground	Moisture Removal (Gal/hr):	
Min. Circuit Amps MCA (A):	29.1	Gas Pipe Connection (inch):	5/8
Max Overcurrent Protection (MOP) (A):	35	Liquid Pipe Connection (inch):	3/8
Dimensions (HxWxD) (in):	52-15/16 x 35-7/16 x 12-5/8	Condensate Connection (inch):	1
Net Weight (lb):	225	Sound Pressure (H) (dBA):	57
Ext. Static Pressure (Rated/Max) (inWg):	/	Sound Power Level (dBA):	

DIMENSIONAL DRAWING - INDOOR UNIT



3D126498

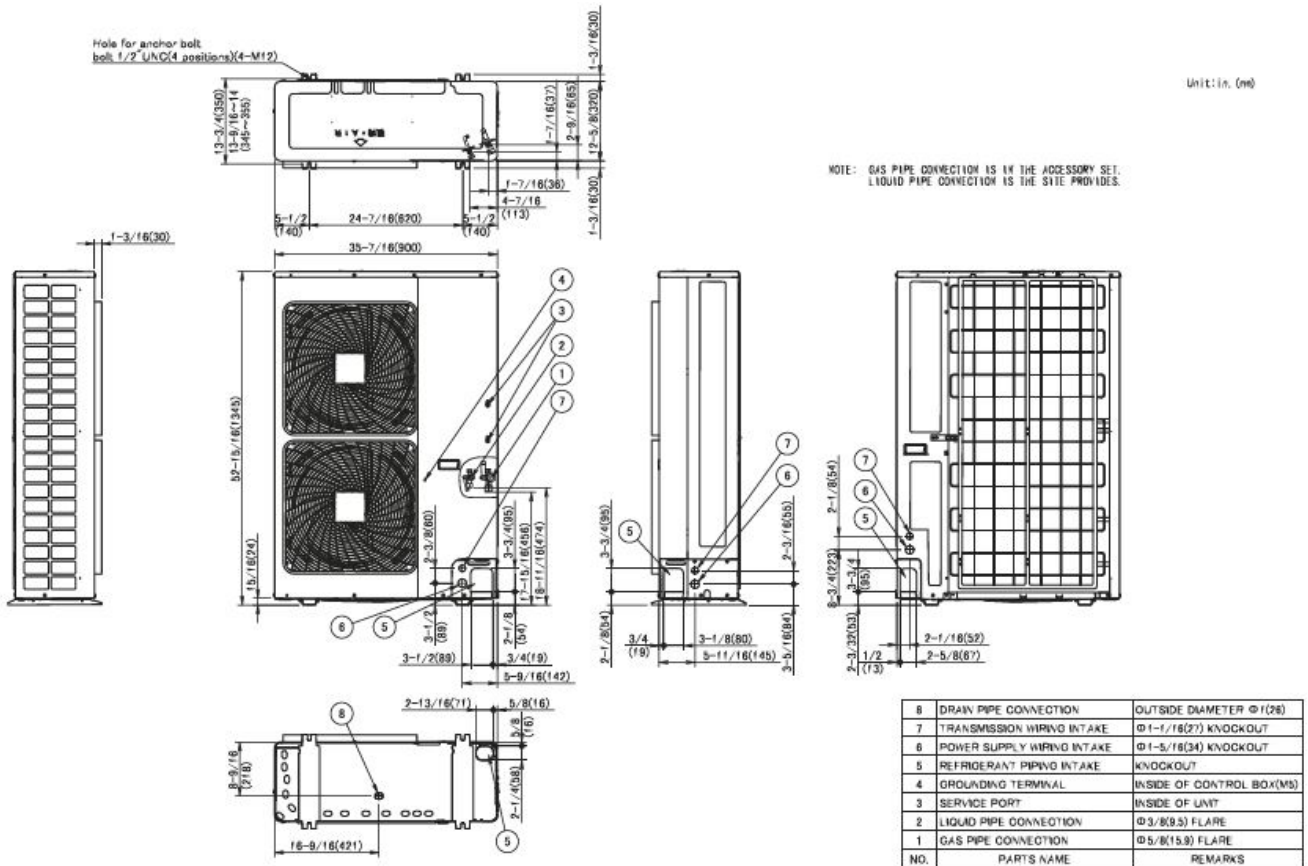
Submittal Data Sheet

2.5-Ton, Heat Pump, SkyAir ODU
RZQ30TBVJUA

OUTDOOR UNIT DETAILS

Power Supply (V/Hz/Ph):	208-230 / 60 / 1	Compressor Stage:	Inverter
Power Supply Connections:	L1, L2, Ground	Capacity Control Range (%):	-
Min. Circuit Amps MCA (A):	29.1	Airflow Rate (H) (CFM):	3741
Max Overcurrent Protection (MOP) (A):	35	Gas Pipe Connection (inch):	5/8
Max Starting Current MSC(A):		Liquid Pipe Connection (inch):	3/8
Rated Load Amps RLA(A):		Sound Pressure (H) (dBA):	57
Dimensions (HxWxD) (in):	52-15/16 x 35-7/16 x 12-5/8	Sound Power Level (dBA):	
Net Weight (lb):	225		

DIMENSIONAL DRAWING - OUTDOOR UNIT





Submittal Data Sheet

2.5-Ton, Heat Pump, SkyAir ODU

RZQ30TBVJUA