

Job Name

Purchaser

Submitted to

Unit Designation

Location

Engineer

Reference

Schedule #

Approval

Construction

Specifications			
Model	Indoor Unit Model Number		AC036MNTDCH/AA
	Outdoor Unit Model Number		AC036JXADCH/AA
Performance	Nominal Capacity	Cooling / Heating (Btu/h)	36,000 / 40,000
	Capacity Range	Cooling (Btu/h)	14,000 - 39,000
		Heating (Btu/h)	11,500 - 48,000
	SEER / EER		18.3 / 9.3
	COP (nominal heating)		2.84
	HSPF		9.5
AHRI Certification Number		10227629	
Power	Voltage	ø / V / Hz	1 / 208-230 / 60
	Working Voltage Range (VAC)		176 - 254 (max. 3% deviation from each)
	Operating Current (min. / std. / max.)	Cooling (A)	4.8 / 16.5 / 18.5
		Heating (A)	3.7 / 17.8 / 23.0
	Max. Breaker	Amps	35
Min. Circuit Ampacity (A)	23.2		
Dimensions	W X H X D (in.)	Indoor Unit	50 3/8 x 13 5/8 x 10
		Outdoor Unit	37 X 47 5/8 X 13
	Weight (lbs.)	Indoor Unit	40.57
		Outdoor Unit	194.01
Heat Exchanger	Indoor & Outdoor Unit	Type	Aluminum Fin / Copper Tube
		FPI	18
		Pipe Diameter (in.)	1/4
	Outdoor Unit	Type	Aluminum, flat fin, micro channel
Sound Pressure Level	Indoor Unit dB(A)	(Silent) / L / M / H	38 / 46 / 48 / 51
	Outdoor Unit dB(A)	Cooling / Heating (high)	49 / 51
Operating Temperatures °F(°C)	Outdoor	Cooling	23 ~ 115°F(-5 ~ 46°C) 0 ~ 115°F(-18 ~ 46°C) w/ baffle
		Heating	-4 ~ 76°F(-20 ~ 24°C)
	Indoor	Cooling	61 ~ 90°F(16 ~ 32°C)
		Heating	T ≤ 80(27°C)
Pipe Connections	Indoor & Outdoor	High side (flare)	3/8"
		Low side (flare)	5/8"
	Maximum (ft.)		246
	Maximum Vertical Separation (ft.)		98
Condensate Connection		11/16" OD	
Refrigerant	Type		R410A
	Control Method		Electronic Expansion Valve
	Factory Charge	oz.	91.68
	Charged for		25 ft
	Additional Refrigerant		0.11 oz/ft over 25 ft
Compressor	Manufacturer		Samsung
	Type		Inverter Driven, Twin BLDC, Rotary
	RLA	Amps	17.0
Evaporator Fan	Type		BLDC with Crossflow fan (1)
	Air Volume	CFM (L/M/H)	699 / 752 / 830
	Output (W) / FLA (A)		58 W / 0.90 A
Condenser Fan	Motor		BLDC With Axial Type Fan (2)
	FLA / Watts / CFM (max.)		0.96 A / 250 W / 3,040 CFM
Optional Accessories	Wired Controller	Simplified Touch Controller	MWR-SH11UN
		Advanced Wired Controller	MWR-WG00UN
	Condensate pump	Aspen Mini Orange	ASP-MO-UNIV 110-250
		Blue Diamond	BD-BLUE230
	Wi-Fi Adapter		MIM-H04UN
	External Temperature Sensor		MRW-TA
	External Contact Control		MIM-B14
	Central Control Interface Module for Connection to DVM Plus Controls (non-NASA)		MIM-N01
	Wall Bracket (for outdoor unit)		CKN-250
	Wind Baffles	Front	WBF-1M2
Back		WBB-2M	
Safety	Certifications		ETL (UL 1995)
			Devices: PCB fuses, indoor unit terminal block thermal fuse, current transformer, over-voltage protection, crankcase heating, temperature limit protection logic, compressor overload sensing

- 

- Wall-mounted evaporator
  - Low ambient control built in
  - The outdoor unit shall supply power to indoor unit via 14 AWG X 3 power wire
  - Auto-restart after power loss
  - The outdoor unit shall have a snow accumulation prevention option setting to prevent snow drifting against an idle outdoor unit.
  - The indoor unit shall have a removable EEPROM that stores system programming information, unit name, and other data
  - All indoor unit addressing and option settings shall be done digitally; the indoor unit does not contain rotary dials or setting switches.
  - The outdoor unit shall have a night time quiet mode option to reduce operating sound during the night. (Automatic or manual activation with dry contact signal)

**Construction**  
The outdoor unit shall be galvanized steel with a baked on powder coated finish for durability

Indoor unit chassis shall be UL94 V0 with a galvanized steel mounting plate

The indoor unit shall have easy-access to wire, pipe, and drain connections via access panel on front of unit for easier installation and service

**Heat Exchanger**  
The indoor unit heat exchanger shall be mechanically bonded fin to copper tube

The outdoor unit heat exchanger shall be aluminum, flat fin, micro channel

**Controls**  
Control signal shall be a DDC type signal

Interconnect control wire between outdoor indoor unit shall be 16AWG X 2 shielded

Wired controls must be purchased separately

Wireless controller included

Connection to optional wired controllers shall be 2 X 16AWG shielded wire

Controls shall integrate with a BMS system

The system shall integrate with the Samsung NASA Controls Solution

No additional interface modules/adapters are required when connecting to Samsung NASA DVM S central control options.

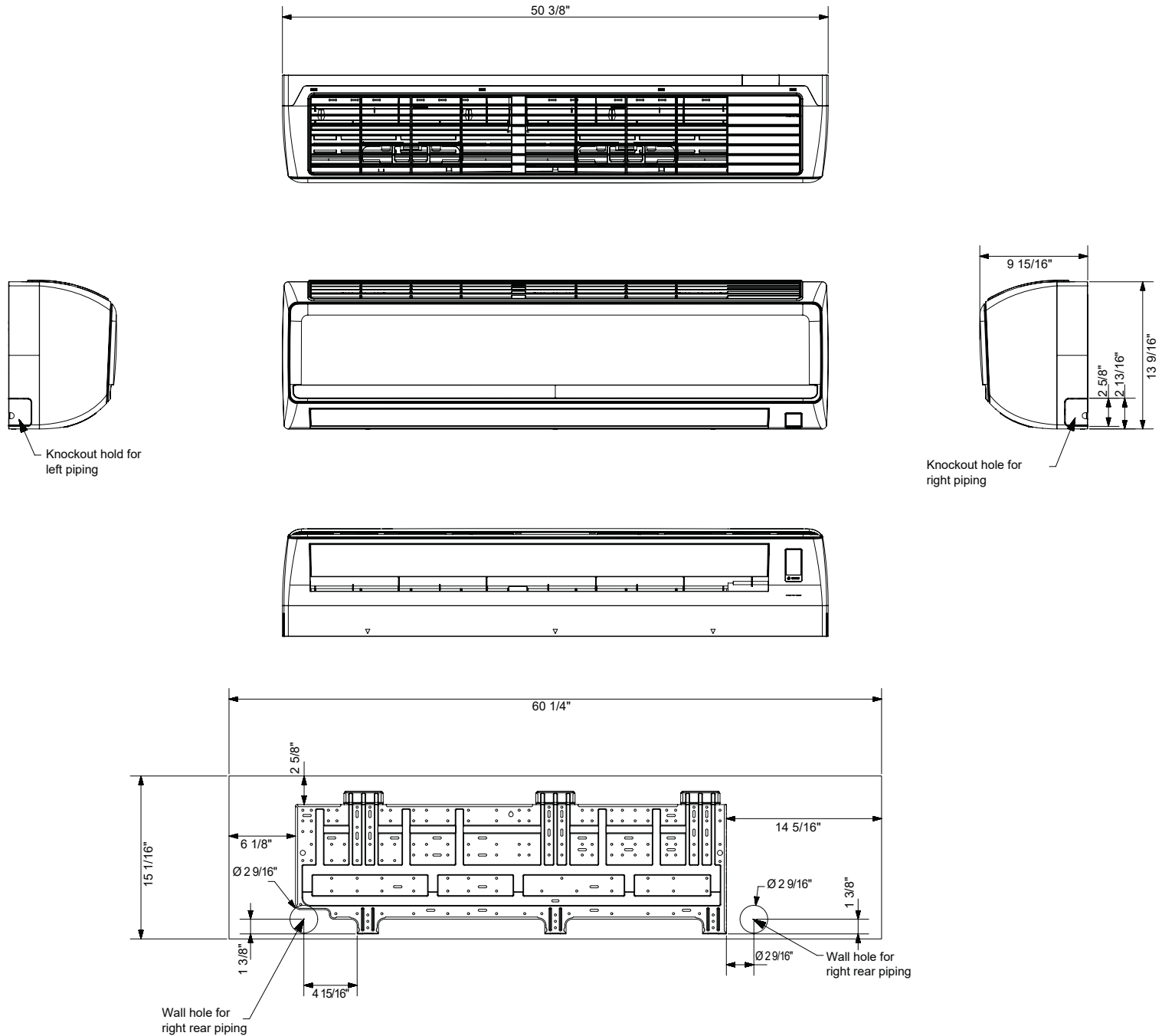
**Refrigerant System**  
The refrigerant shall be R410A

The compressor shall be hermetically sealed, inverter controlled, twin BLDC Rotary

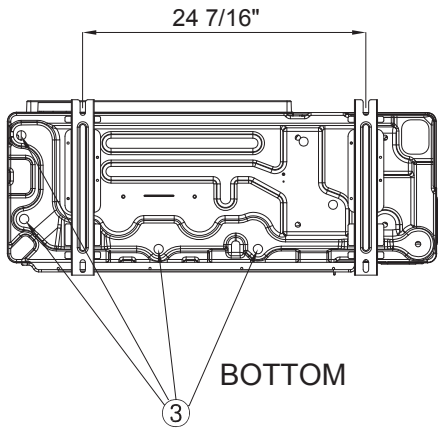
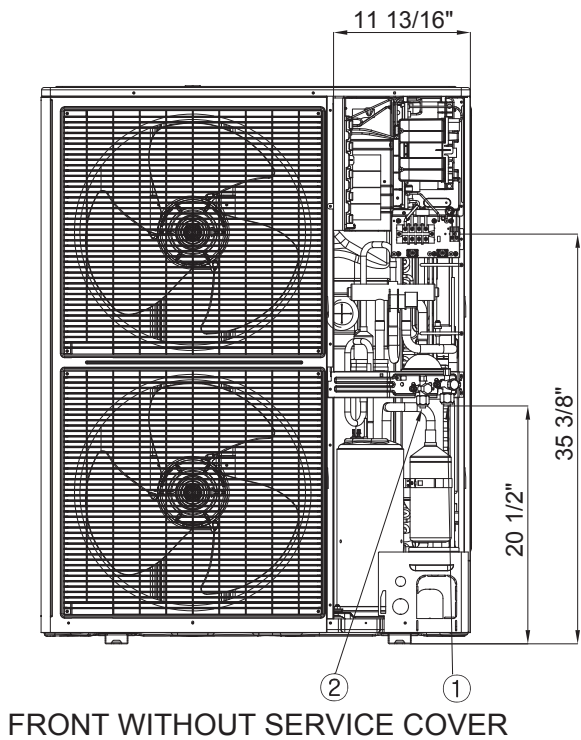
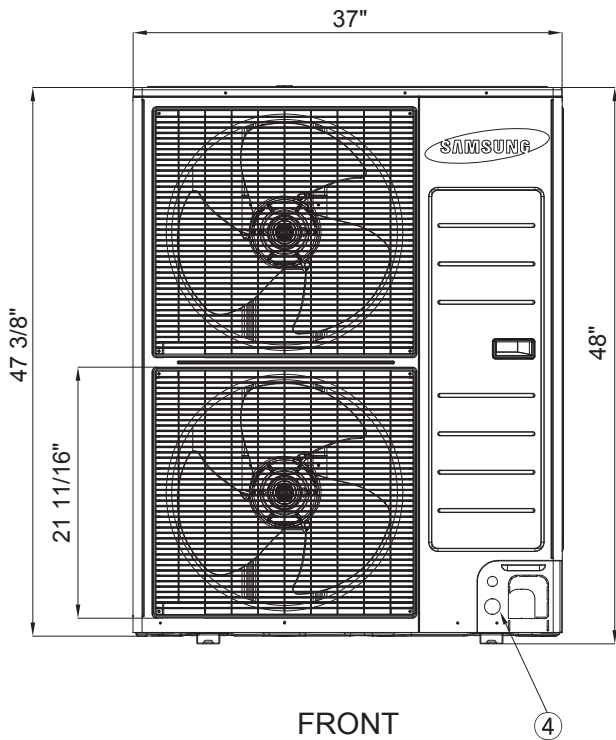
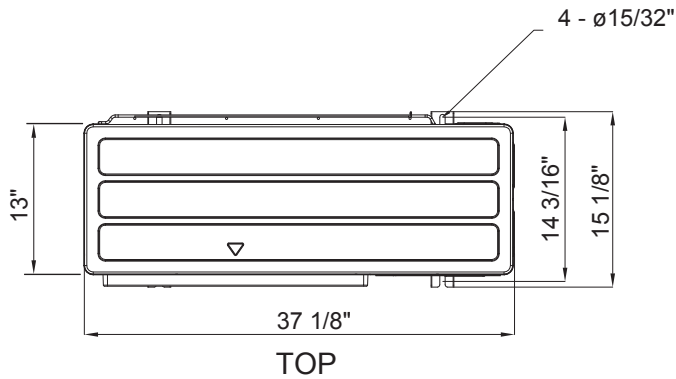
Refrigerant flow shall be controlled by an electronic expansion valve at outdoor unit

Soft-start to reduce current demand during compressor start

**Warranty**  
10 years compressor, 10 years parts, 1 year limited labor (conditions apply)



No.	Name	Description
1	Liquid pipe connection	3/8"
2	Gas pipe connection	5/8"
3	Drain pipe connection	11/16" OD
4	Power supply & Communication wiring conduit	-



No.	Description
1	Suction service valve
2	Liquid service valve
3	Drainage hole
4	Power and communication conduit openings