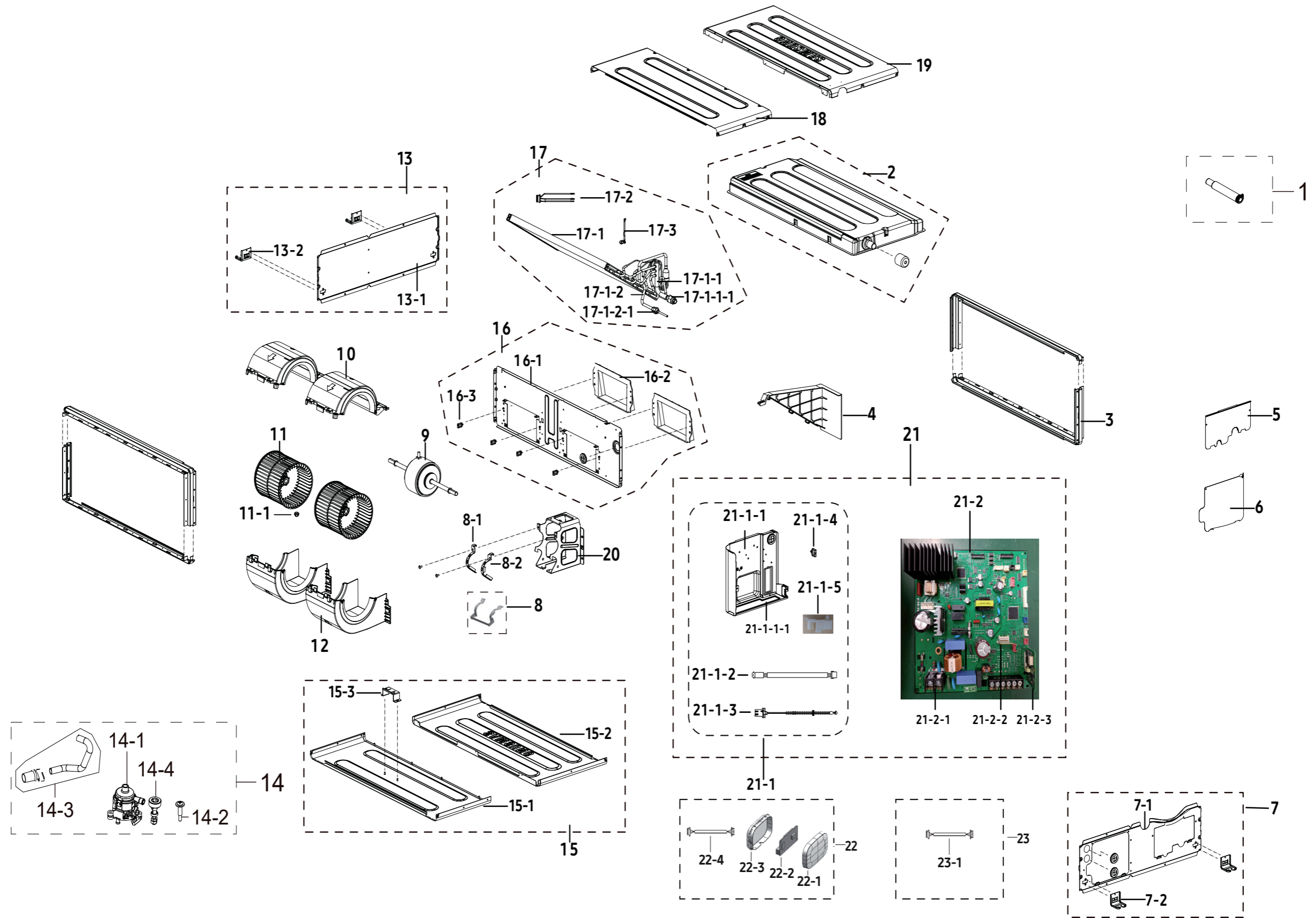


Indoor Unit (Global Duct 1)

■ AJ012DNHDCG/AA



## Parts List(AC012DNHDCG/AA)

No.	Code No.	Description	Specification	Q'TY	SA/SNA
1	DB61-06904A	HOLDER-HOSE	CAC MAX 4,PVC,T3.5,D32.43,BLACK,-,V-0,-	1.0	SA
2	DB94-04349B	ASSY TRAY DRAIN	GD1 DUCT,DRAIN PUMP BUILT-IN	1.0	SA
3	DB90-07910A	ASSY CABINET-FRAME	Global Duct,SSEC	2.0	SA
4	DB90-08063B	ASSY SUPPORT-EVAP	global duct,GD1&2,ASSY	1.0	SA
5	DB90-07905B	ASSY COVER-PIPE	AC052DNMDKF/TS,ASSY	1.0	SA
6	DB63-03544A	COVER CONTROL	Global Duct,GI-SGCC,T0.8	1.0	SA
7	DB90-07904A	ASSY CABI SIDE-RIGHT	Global Duct,SSEC	1.0	SA
8	DB90-11943A	ASSY HOLDER-MOTOR	DVM,ASSY HOLDER-MOTOR,R,T2.0	1.0	SA
8-1	DB61-05983A	HOLDER-MOTOR	GLOBAL DUCT,GI-SGCC,T2,L155,-,-,-	1.0	SA
8-2	DB61-05984A	HOLDER-MOTOR	GLOBAL DUCT,GI-SGCC,T2,L155,-,-,-	1.0	SA
9	DB31-00639D	MOTOR BLDC FAN	SIC-70CW-F1153-2S,1200RPM,310V,2A,153W,8Pole,CCW	1.0	SA
10	DB90-07916A	ASSY CASE FAN-BOTTOM	Global Duct,SSEC	2.0	SA
11	DB94-04138A	ASSY BLOWER	AC-F410G,180PI	2.0	SA
11-1	DB60-20011A	BOLT-SPECIAL	-,-,-,L10,-,M6,-,-,-,-	1.0	SA
12	DB90-07917A	ASSY CASE FAN-TOP	Global Duct,SSEC	2.0	SA
13	DB90-07903B	ASSY CABI SIDE-LEFT	Global Duct,SSEC	1.0	SA
14	DB94-05032A	ASSY DRAIN PUMP	MDP-G0755Q,Global Duct Built-in type	1.0	SA
14-1	DB31-00649M	PUMP DRAIN	400cc/min,-,1200mm,UL224,L665,V-0	1.0	SA
14-2	DB60-00150A	SCREW-SPECIAL	HWH,M4,L26,ZPC(WHT),SWRCH18A	2.0	SA
14-3	DB67-01174A	DRAIN HOSE-SOCKET	CH140EAMC,POM,INNER WHITE,-,K300	1.0	SA
14-4	DB95-04462D	SWITCH FLOAT	70mm,3.4mm,660mm,SMH250-02L(BLK),SMH-250J-02RT,YST-025L3	1.0	SA
15	DB90-07908C	ASSY CABI TOP	MDDD012S6-1P,Lennox model GD-1	1.0	SA
16	DB94-04345C	ASSY PARTITION	AM052ANHDBH1,ASSY	1.0	SA
16-1	DB67-01422C	PARTITION	AM052ANHDBH1,GI-SGCC,T1.2,-,-,-	1.0	SNA
16-2	DB61-05904A	CASE BLOWER-OUT	AC024HBMDKD/TC,HIPS,T2.5,L258.7,NATURAL,-,VE-1877,GD2	2.0	SA
16-3	DB71-00058A	WIRE-SADDLE	PA66,WHITE,ID22.5	5.0	SNA
17	DB96-25353B	ASSY EVAP PRATS	AC009BNHDCH/AA,ASSY	1.0	SA
17-1	DB96-23011F	ASSY EVAP-MAIN	AC012DNHDCG/AA,GD-1	1.0	SA
17-1-1	DB96-25350C	ASSY TUBE EVAP-OUT	AC012DNHDCG/AA,GD-1	1.0	SA
17-1-1-1	DB60-30010B	FASTENER-NUT FLARE	AR12RV3HEWKNNA,BRASS,-,-,-,-,-,-,-,-	1.0	SA
17-1-2	DB96-25347A	ASSY TUBE EVAP-IN	AC018TNMPEH/IQ,ASSY	1.0	SNA
17-1-2-1	DB60-30010A	FASTENER-NUT FLARE	-,BRASS,-,-,-,1/4"	1.0	SA
17-2	DB95-05011A	ASSY THERMISTOR IN-EVA IN OUT	SMH200-06H,L550,10kohm,3%,25C,6phi	1.0	SA
17-3	DB81-00635A	SPRING ETC-SENSOR	DVM-SYSTEM,STS304,ID2.5,OD4.5,L44,T0.3,-,W2,NONE,-,-,-	2.0	SA
18	DB64-03019A	CABINET-BOTTOM FAN	GLOBAL DUCT,GI-SGCC,T0.6	1.0	SA
19	DB90-08304B	ASSY CABI BOTTOM-COND	4MUD4518B10N0A,SSEC	1.0	SA
20	DB61-05970B	BRACKET MOTOR	AC018MNHDCCH/AA,GI-SGCC,T1.8	1.0	SA
21	DB92-05575A	ASSY PBA KIT-IN MODULE	INDOOR,AC5000B,CAC GD PND WiFi,Standard	1.0	SNA
21-1	DB90-12957E	ASSY CASE PCB	AC052DNMDKF/TS,ASSY	1.0	SA
21-1-1	DB90-11460B	ASSY CASE CONTROL	AC052DNMDKF/TS,ASSY	1.0	SA
21-1-1-1	DB61-07402C	CASE CONTROL	AC071DNMDKC/TS,GI-SGCC,T0.7,L274.3,-,-,-	1.0	SA
21-1-2	DB32-00241C	SENSOR HUMIDITY	5V,90%RH,AC,5%,600mm,4P	1.0	SA
21-1-3	DB95-05009D	ASSY THERMISTOR	AC,250,10,±3,25,-	1.0	SA
21-1-4	DB71-50021A	WIRE-SADDLE	PA,NTR,DAWS-2N(R)	2.0	SNA
21-1-5	DB61-08089A	HOLDER SENSOR	AC160DNMDKF/TS,PP,-,EARTH BROWN,-,-,MT62AW	1.0	SA
21-2	DB92-05571A	ASSY PCB MAIN-IN	HW,INDOOR,CAC GD PND,194*194,Y,SMPS,Standard	1.0	SA
21-2-1	DB37-00026A	TERMINAL BLOCK	DAPC 3013-2P-M,MELAMINE,300V,30A,28x19x21mm,D4,NO,2P,-	1.0	SA
21-2-2	DB92-04020A	ASSY PCB SUB	HW,SUB,20*25,Indoor EEPROM,N,Standard	1.0	SA
21-2-3	DB92-02793B	ASSY FUNCTION	COMM,R290 EHS,2Line Sub (Explosion protection),Standard	1.0	SNA
22	DB90-11882U	ASSY CASE PCB	AC018DNHDCG/AA,Global duct	1.0	SA
22-1	DB61-07593A	CASE-TOP	Wi-Fi,ABS,T1.5,L66,DA WHITE,HG-0760GP	1.0	SA
22-2	4709-003260	W-LAN MODULE	CCAR210R,SDA8700CSM,IEEE802.11,2.4GHz,5V,1X1,54.0x30.0x6.4mm,-20to+85C	1.0	SA
22-3	DB61-07592A	CASE-BOTTOM	Wi-Fi,ABS,T1.5,L66,DA WHITE,HG-0760GP	1.0	SA
22-4	DB93-17392E	ASSY CONNECTOR WIRE-DC SIGNAL	5,2095,26,RED,SMH200-H05H3/WHT,SMH200-H05H3/YEL,-,600,-,-,-,-,PBA-WIFI,-,EHS WIFI PJT,-	1.0	SA
23	DB98-40657A	ASSY MANUAL	AJ009DNHDCG/AA,SSEC	1.0	SNA
23-1	DB93-17392F	ASSY CONNECTOR WIRE-DC SIGNAL	5,2095,26,RED,SMH200-H05PR/WHT,SMH200-H05H3/YEL,-,1400,-,-,-,-,PBA-WIFI,-,-	1.0	SA