




# Hisense Hi EDGE Heat Pump SEER2 20.00 and HSPF2 9.80



**Submittal Data:**  
**AO-18U3R26E2 Heat Pump and AS-18U3RHB25E Wall-Mounted IDU**  
**18,000 BTU/H Cooling Capacity and 18,000 BTU/H Heating Capacity**  
**R32 Refrigerant System - EPA Low GWP Compliant Product**

Job Name:		Location:	
Purchaser:		Date:	Engineer:
Submitted to:		Submitted by:	
Other / Notes:			FOR: <input type="checkbox"/> File <input type="checkbox"/> Resubmit <input type="checkbox"/> Approval <input type="checkbox"/> Other

### Equipment Features:

 AS-18U3RHB25E   RCH-RTY5-0   AO-18U3R26E2	<p><b>OUTDOOR UNIT</b></p> <p><b>Efficiency and comfort:</b> Up to 20 SEER2 / 11.95 EER2 / 9.8 HSPF2</p> <p><b>Low Ambient Performance:</b> Confirmed continuous operation as low as -4°F (-20°C) ambient temperature.</p> <p><b>R32 EPA Low-GWP Refrigerant</b></p> <p><b>Base Pan Electric Heater</b> installed for stable operation in extreme conditions.</p> <p><b>BLUE Fin Anti-Corrosion Heat Exchanger</b> and Insect-Proof electronics box design for long-lasting reliability.</p> <p>Outdoor <b>Intelligent defrosting tech</b> improves system efficiency and reliable operation.</p> <p><b>INDOOR UNIT</b></p> <p><b>Quick and easy installation</b> with mounting bracket and detachable IDU base plate.</p> <p>Integrated <b>Wi-Fi plus the Connectlife smart app</b> with Alexa and Google Assistant control put easy operation right at your fingertips.</p> <p><b>Build in A2L Safety Sensor</b> - Ensures safety for both homeowners and technicians.</p> <p>Blue Fin Anti-Corrosion Heat Exchanger, <b>Max 1,000-hour salt-spray tested</b> for extended life and increase performance.</p> <p><b>4-Way Air Flow</b> for optimized comfort.</p> <p>Easily accessible and <b>washable High Definition Filter</b> for improved air quality and maintenance.</p> <p>Self-cleaning indoor with <b>Hisense FrostClean™ technology</b> to reduces dust and bacteria for a healthier home</p> <p><b>Whisper-Quiet Operation</b> with noise level as low as 28dB.</p> <p><b>"I Feel!" Mode</b> to control the temperature user location/remote vs indoor unit.</p> <p>Display <b>Dimmer</b> turns off the both displays to eliminate lighting at night</p> <p><b>Child-Safe Finger Guards</b> to protect small hands from indoor fan.</p> <p>Contact your local Hisense Partner for complete list of accessories</p>
--	--

Cooling at 95°F (35°C)	Maximum Capacity	Btu/h	19,000
	Rated Capacity	Btu/h	18,000
	Minimum Capacity	Btu/h	6,500
	Maximum Power Input	W	1890
	Rated Power Input	W	1505
	Moisture Removeval	Pints/h ~ L/h	3.2~1.8
	Sensible Heat Factor	multiplier	0.78
	Power Factor (208V / 230V)	%	98%
Heating at 47°F (8.3°C)	Maximum Capacity	Btu/h	19,000
	Rated Capacity	Btu/h	18,000
	Maximum Power Input	W	1490
	Rated Power Input	W	1350
	Power Factor (208V / 230V)	%	98%
Heating at 17°F (-8.3°C)	Maximum Capacity	Btu/h	16,000
	Rated Capacity	Btu/h	14,800
	Maximum Power Input	W	1800
	Rated Power Input	W	1350

**Submittal Data Continued: AO-18U3R26E2 Heat Pump and AS-18U3RHB25E Wall Mount IDU**

Heating at 5°F (-15°C)	Maximum Capacity	Btu/h	13,400
	Maximum Power Input	W	1650
Heating at -4°F (-20°C)	Maximum Capacity	Btu/h	10,000
	Maximum Capacity	Btu/h	N/A
Efficiency	SEER2	Information	20
	EER2	Information	11.95
	HSPF2 [W]	Information	9.8
	COP at 47°F ~ (-8.3°C) Maximum Capacity	Information	3.74
	COP at 17°F ~ (-8.3°C) Maximum Capacity	Information	2.61
	COP at 5°F ~ (-15°C) Maximum Capacity	Information	2.4
	COP at -13°F ~ (-25°C) Maximum Capacity	Information	N/A
	ENERGY STAR™	Information	YES
Electrical	Voltage, Phase, Hertz	Information	208V/230V, 1, 60
	Required Voltage Range	V AC	187~253
	Voltage - Indoor IDU	V AC	208V/230V, 1, 60
	Power Supply IDU	V AC	Powered by the Outdoor Unit
	Recommended Outdoor Fuse/Breaker Size	A	Outdoor: 20A
	Recommended Wire Size (Power/ Communication)	AWG-#	14*3/ 18*4
Indoor Unit	MCA	A	3
	Fan Motor Full Load Amperage	A	0.4
	Fan Motor Type	Information	cross-flow fan/DC/45
	Air Flow Rate Cooling (U-H-M-L-S)	m3/h / CFM	1100/1025/886/792/680~ 647/603/521/466/400
	Cooling speed(Super/High/Mid/Low)	r/min	1180/1100/950/850
	Heating speed(Super/High/Mid/Low)	r/min	1150/1100/950/800
	Sound Pressure Levels Cooling (U-H-M-L-S)	(±1 dB[A]) <sup>3</sup>	49/46/39/37/33
	Sound Pressure Levels Heating (U-H-M-L-S)	(±1 dB[A]) <sup>3</sup>	49/46/39/37/33
	Drain Pipe Size	In. [mm]	3/4(19)-O.D
	Coating on Heat Exchanger--Fin Salt Spray Test	Type ~ Hours	Blue-500
Net IDU Weight	Lbs. ~ kg	29~13	
Outdoor Unit	MCA	A	14.5
	MOCP or Maximum Circuit Breaker	A	20
	Rated Load Amps	A	0.4
	Fan Motor Type and Load	Type ~ W	Propeller fan ~36
	Refrigerant Metering Control	Type	Capillary Throttle Valve
	Coating on Heat Exchanger--Fin Salt Spray Test	Type ~ Hours	Blue-1000
	Outdoor air flow (H/M/L)	m3/h / CFM	2200/1800/1250- 1294/1059/735
	Sound Pressure Cooling Mode (ISO 3745)	(±1 dB[A]) <sup>3</sup>	56
	Base Pan Heater	Feature	Included Standard Option
NET ODU Weight	Lbs. ~ kg	75 ~ 34	
Outdoor Unit (Cont.)	Compressor Type and Control	Type	Rotary-INVERTER
	Compressor Oil [Type ~ Charge]	PVE ~ oz. / mL	ESTER OIL VG74~14.2/420
	Rated Current Load [Cooling - Heating]	A	6.4 - 8.1
Refrigerant Piping and Volume	Refrigerant Type (GWP)	Type	R32 (675 GWP)
	Refrigerant Charge in System	oz. / g	46/1300
	Pipe Length No Additional Refrigerant	ft. / m	24.61/7.50
	Additional Refrigerant	oz/ft ~ g/m	0.22~ 20
	Minimum Pipe Length~Maximum Pipe Length	ft./m ~ ft./m	13.12/4~98.43/30
	Maximum Height Difference (ODU to IDU)	ft. / m	49.21 / 15
	Liquid Line	in. OD	1/4
Vapor Line	in. OD	1/2	
Operating Temperature Range	Ambient Cooling [ Minimum ~ Maximum]	°F / °C	(5~118)/(-15~48)
	Ambient Heating [ Minimum ~ Maximum]	°F / °C	(-4~75)/(-20~24)
	Indoor Cooling [ Minimum ~ Maximum]	°F / °C	(61~86)/(16~30)
	Indoor Heating [ Minimum ~ Maximum]	°F / °C	(61~86)/(16~30)
Product Warranty	Residential Application	Information	10 Years Parts
	*Requires registration-some restrictions apply	Information	1 Year Labor
		Information	Up to 1 Year Unit Replacement

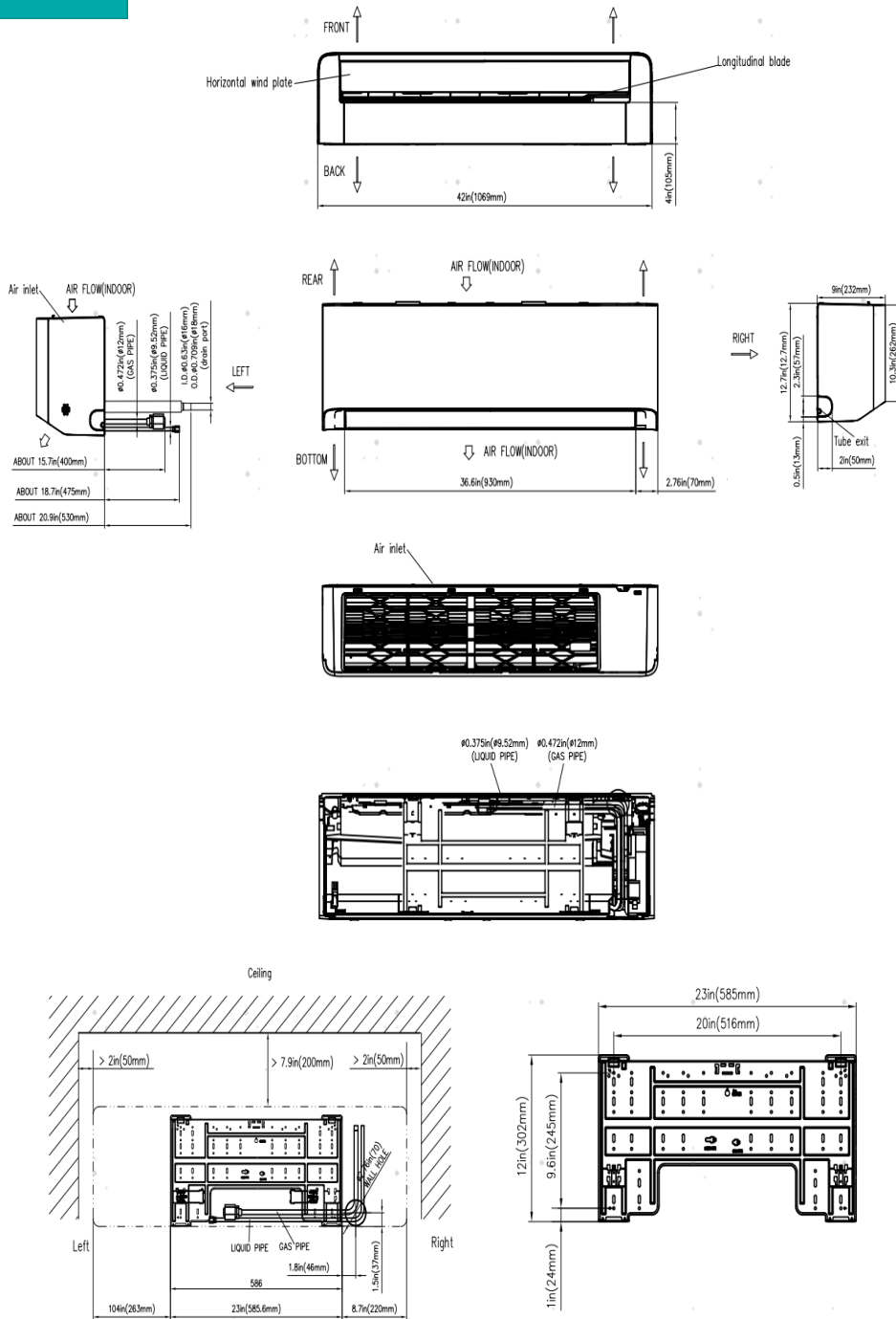
**Certifications:**



# Dimensions: Indoor Unit

**Hisense**

Unit: inch (mm)

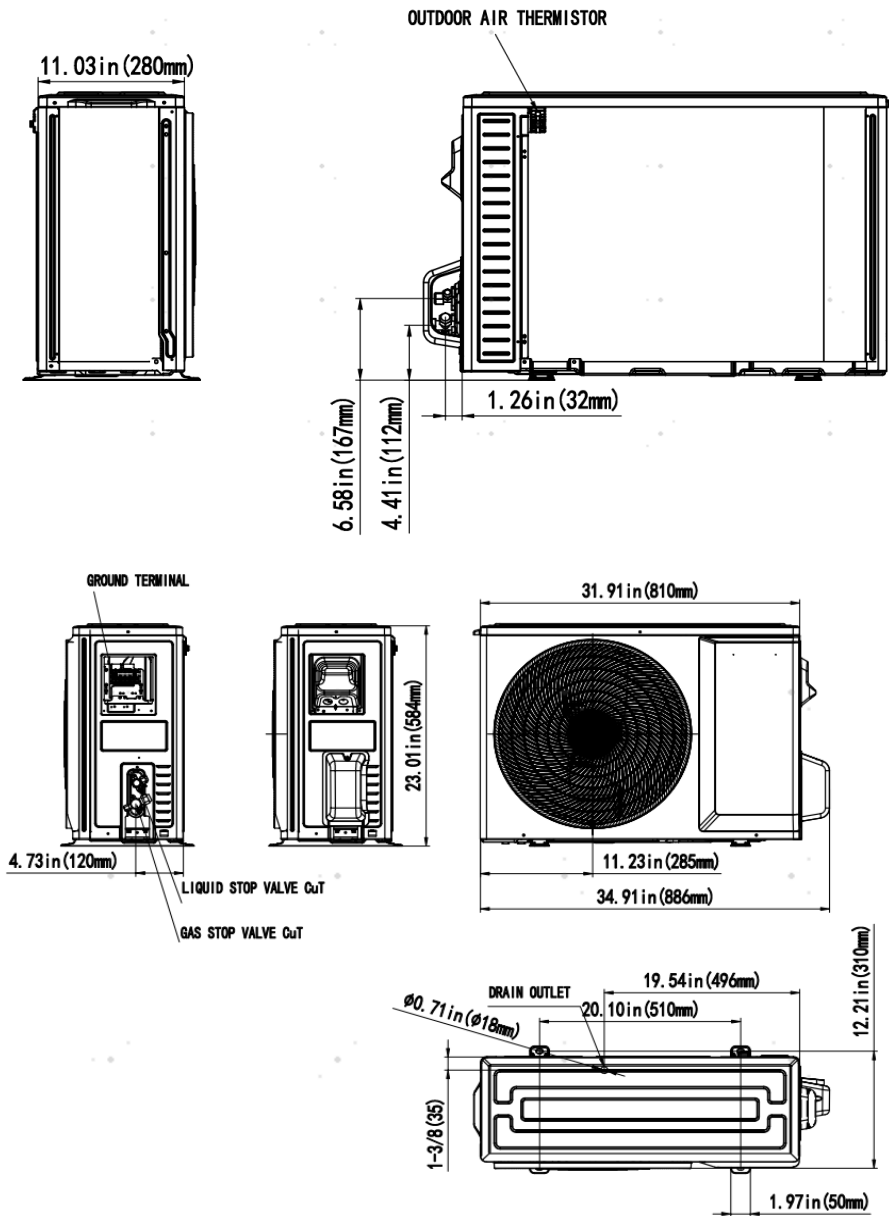


Note: Liquid Pipe Size and Gas Pipe Size are subject to the Specifications  
 Specifications are subject to change without notice

Dimensions: Outdoor Unit

Hisense

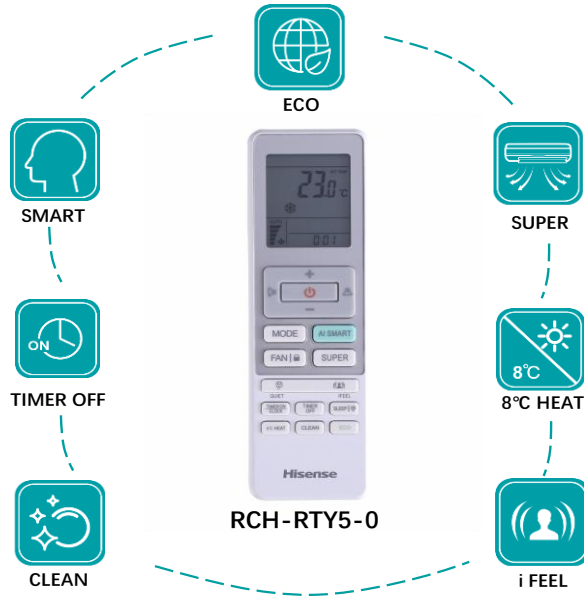
Unit: inch (mm)



Note: Liquid Pipe Size and Gas Pipe Size are subject to the Specifications  
 Specifications are subject to change without notice

## WIRELESS REMOTE CONTROLLER

Hisense



### Button Description



MODE

Press this button to select the operation mode



TEMP+

Used to adjust the set temperature and the timer, also real time



SWING

Used to adjust vertical adjustment louver swinging and set the desired up/down airflow direction



SWING

Used to adjust the swing of the horizontal louver and set the left/right airflow direction



SUPER

Used to start or stop the fast cooling/heating (Fast cooling operates at high fan speed with 60°F (16°C) set temp automatically. Fast heating operates at auto fan speed with 80°F (30°C) set temp automatically)



FAN/LOCK

Used to select fan speed in sequence: auto, higher, high, medium, low, lower. Press this button for 5 seconds to activate LOCK mode; press it again for 5 seconds to deactivate the mode.



i FEEL

Used to set or cancel I FEEL Mode. In I FEEL mode the Air Conditioner operates basis temperature sensor fitted in remote instead of machine. Advice to use I FEEL mode end the remote put where the indoor unit receives signal easily



CLEAN

Used to set the Clean operation



SMART

Used to start Smart Running Mode. Smart Mode automatically selects the appropriate operating mode—Cooling, Dry, Fan Only, or Heating

OPTIONAL WIRING CONTROLLER



Large **LCD Display** for EZ read and control



24h Real Timer and **Weekly Timer** setting



Eliminate the feeling of being cold  
Reduce power consumption

HS-WC01U  
HS-WC02U



- ❖ **Signal receiver** of Remote Control – **only HS-WC01U**
- ❖ **Central Controller** for Max. 16 units - **only HS-WC01T**

Button Description

- 1. ON/OFF BUTTON**  
The appliance will be started or stopped when this button is pressed.
- 2. RUN INDICATOR**  
Indicates that the appliance is on.
- 3. MODE BUTTON**  
Press this button to select the operation mode.
- 4. FAN BUTTON**  
Used to select fan speed in sequence high-auto-low-medium-high.
- 5. SWING BUTTON**  
Used to stop or start adjustment louver swinging and set the desired airflow direction.
- 6. TIMER/CLOCK BUTTON**  
Used to set the current time or set timer on/off.
- 7. SLEEP BUTTON**  
Used to set or cancel Sleep Mode operation.
- 8. ENTER BUTTON**  
Used to confirm settings.
- 9. CANCEL BUTTON**  
Used to cancel settings.
- 10. ADD. FUNC. BUTTON**  
Used to set filter clean, hot water, fresh air, electric heater, etc.
- 11. INCREASE SETTING BUTTON**  
Used to raise the set temperature.  
It raise the values when setting.
- 12. DECREASE SETTING BUTTON**  
Used to lower the set temperature.  
It lower the values when setting.
- 13. LIQUID CRYSTAL DISPLAY(LCD) SCREEN**  
Used to display indicator screens.
- 14. BUILT-IN INFRARED SIGNAL RECEIVER**  
Used to receive infrared signal.