

Job Name _____
 Purchaser _____
 Submitted to _____
 Unit Designation _____

Location _____
 Engineer _____
 Reference _____ Approval _____ Construction _____
 Schedule # _____

Specifications

Model	US Code		JNH18JDT
	Model Number		AJ018TNJDCH/AA
Performance	Nominal Capacity	Cooling (Btu/h)	17,700
		Heating (Btu/h)	19,100
Power	Voltage (øV/Hz)		1 / 208-230 / 60
	Nominal Running Current (A)		0.35
Fan	Type		Turbo (1)
	Motor	Type	BLDC (1)
		FLA / Output	0.35A / 35 W
Airflow	CFM	L/M/H	261 / 297 / 332
Refrigerant	Type		R410A
	Control Method		Electronic Expansion Valve (at outdoor unit)
Piping Connections	Liquid (flare)	Inches	1/4
	Suction (flare)	Inches	1/2
	Drain	Inches	ID 1
Unit Dimensions	W X H X D	Inches	28 3/8 X 24 7/16 X 7 13/16
	Weight	lbs.	34.60
Sound Level	L / M / H	dB(A)	36 / 39 / 42
Accessories	Wired Controllers	Advanced	MWR-WG00UN
		Simple Touch	MWR-SH11UN
	Wireless Remote Controller		AR-EH04U
	24VAC Thermostat Adapter		MIM-A60UN
	Wi-Fi Adapter For Remote Control ¹		MIM-H04UN
	External Temperature Sensor		MRW-TA
	External Contact Control Interface Module		MIM-B14
	CN83 Pigtail		DB39-01263A
Line sets - insulated and flared, interconnect cables included		25' - ILS2506	
		50' - ILS5006	
Safety Certifications		ETL (UL 1995)	



- High-voltage terminal block temperature sensor to disable unit in the event overheating of power connection.
- The unit shall discharge cool air from the upper outlet louver (motorized) while in cooling mode and warm air from the upper and lower (manual adjustment only) outlets while in heating mode.
- System energy consumption can be viewed using the Samsung SmartThings mobile app (not revenue grade, for reference only)
- The indoor unit shall be powered by the outdoor unit
- Electro-static, washable, pleated filter as standard (included)
- Gravity drain as standard
- The front panel shall have LED indicator lights, touch controls, IR receiver, and 1 motorized louver.

Construction

Insulated, HIPS chassis certified to UL94 V0

Heat Exchanger

The heat exchanger shall be mechanically bonded fin to copper tube

Indoor Fan

Indoor fan is turbo type with a single fan motor

Three fan speed settings and auto setting

Controls

Control signal shall be a DDC type signal

Interconnect control wire between outdoor and indoor shall be 16AWG X 2

Dual set temperature support when connected to MWR-WG00UN Advanced Wired Controller.

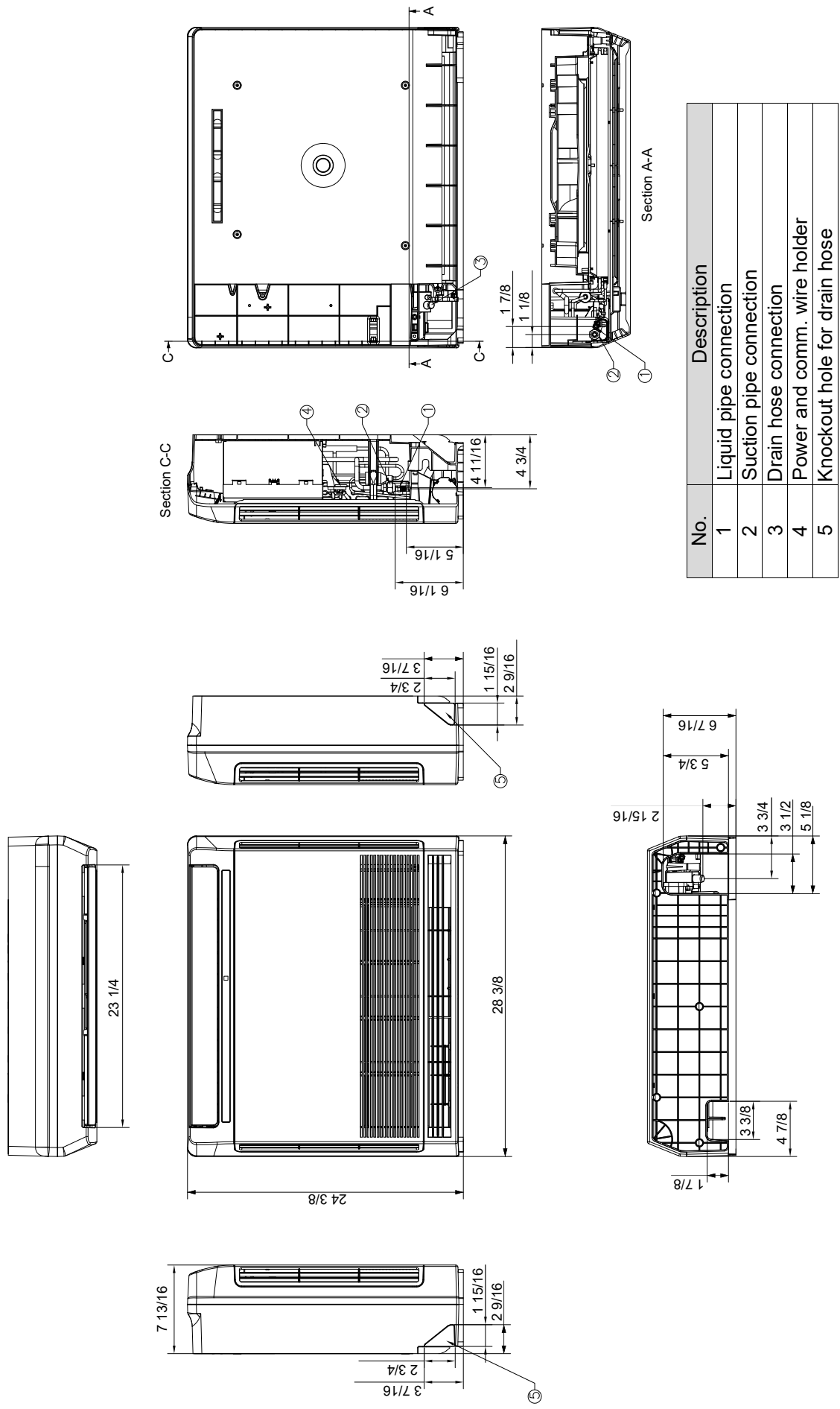
The system shall integrate with the Samsung Controls Solution.

Compatibility

Will only operate with Samsung outdoor unit model numbers: AJ024TXJ3CH/AA (JXH24J3T), AJ036TXJ4CH/AA (JXH36J4T), AJ048TXJ5CH/AA (JXH48J5T), AJ030TXS4CH/AA (JXH30S4T), AJ036TXS4CH/AA (JXH36S4T)

Nominal cooling capacities are based on: Indoor temperature: 80 °F DB, 67°F WB. Outdoor temperature: 95°F DB, 75°F WB.
 Nominal heating capacities are based on: Indoor temperature: 70 °F DB, 60°F WB. Outdoor temperature: 47°F DB, 43°F WB.
 Samsung HVAC maintains a policy of ongoing development, specifications are subject to change without notice.

¹ MIM-H04UN is only required for remote control of cassette, console, and duct indoor units. Only one per system is required.



No.	Description
1	Liquid pipe connection
2	Suction pipe connection
3	Drain hose connection
4	Power and comm. wire holder
5	Knockout hole for drain hose