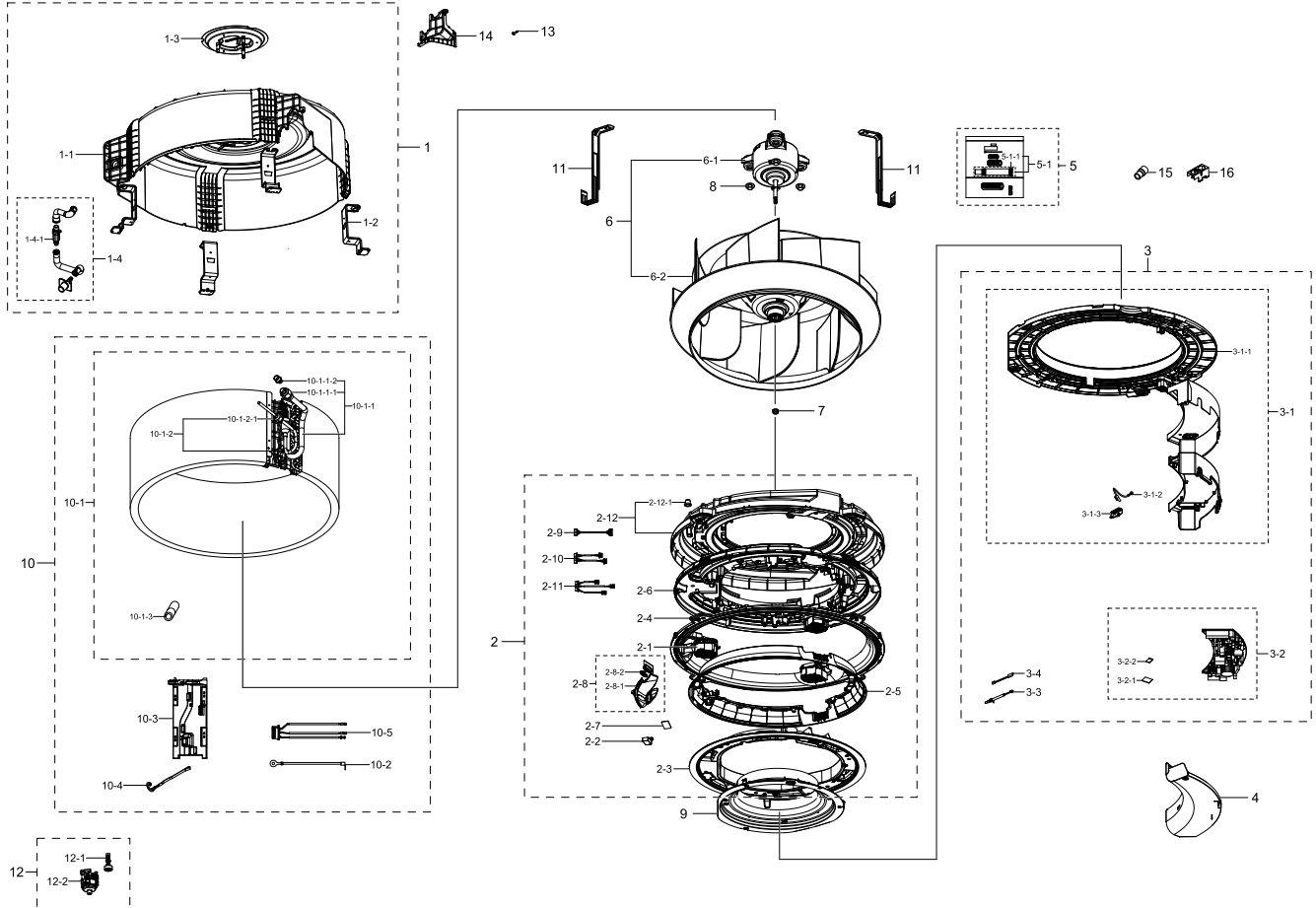


# 1. AC048DN6DCG/AA

AC048DN6DCG/AA

## Exploded View



## Parts List

No.	Lvl.	Loc.	Material Code	Description & Specification	SNA	Qty.
1	3	A2676	DB90-09380A	ASSY CABI BODY; 360CST LRG	SA	1
1-1	4	B0222	DB61-06570A	BODY; HIPS,T2,BLACK,L,S834S1	SA	1
1-2	4	P0229	DB61-06585A	PLATE-HANGER; PLATE-HANGER,GI-SGCC,T1.6	SA	4
1-3	4	A2803	DB90-05821A	ASSY BRACKET MOTOR; Global 4W-CST	SA	1
1-4	4	A0912	DB94-06051A	ASSY HOSE DRAIN; AC145KN4PBH1	SA	1
1-4-1	5	V0020	DB62-09665A	VALVE CHECK; PPO,BLACK,1-1,8	SA	1
2	3		DB90-09387B	ASSY FRAME OUTLET-MODULE; 360 CST	SA	1
2-1	4		DB31-00674A	MOTOR BLDC FAN; Booster Fan motor,2800,12	SA	3
2-2	4		DB61-06616A	CASE PCB-SUB; PC,NATURAL,SR1300	SA	1
2-3	4		DB90-09379A	ASSY COVER-UP; 360CST	SA	1
2-4	4		DB90-09396A	ASSY FRAME OUTLET-UP; 360CST LRG	SA	1
2-5	4		DB90-09397A	ASSY COVER-OUTLET; 360CST	SA	1

Exploded Views and Parts List

No.	Lvl.	Loc.	Material Code	Description & Specification	SNA	Qty.
2-6	4		DB90-09463A	ASSY FRAME OUTLET-LOW; 360CST	SA	1
2-7	4	A0694	DB92-02805A	ASSY PCB SUB; RECEIVER,DVM NASA_MASTER_N,	SA	1
2-8	4	A0882	DB93-15822A	ASSY DISPLAY; 360CST	SA	1
2-8-1	5		DB64-03204A	WINDOW DISPLAY-B; WINDOW DISPLAY-B,PMMA,T	SA	1
2-8-2	5	A1762	DB92-03855A	ASSY PCB DISPLAY; DISPLAY PBA,AC9000K,97*	SA	1
2-9	4	A0636	DB93-06159B	ASSY CONNECTOR WIRE-DISPLAY; 10,2095,26,B	SA	1
2-10	4		DB93-16336A	ASSY CONNECTOR WIRE-DC SIGNAL; 10,2095,26	SA	1
2-11	4		DB93-15861B	ASSY CONNECTOR WIRE-DC SIGNAL; 12,2095,26	SA	1
2-12	4	A2303	DB94-06052A	ASSY TRAY DRAIN; AC145KN4PBH1	SA	1
2-12-1	5	R0097	DB73-00133B	RUBBER-CAP DRAIN SOCKET; EPDM	SA	1
3	3		DB92-05567A	ASSY PBA KIT-IN MODULE; INDOOR,AC5000B,36	SNA	1
3-1	4		DB90-09386C	ASSY CASE CONTROL; 360CST	SA	1
3-1-1	5	C1140	DB63-03763A	COVER-BELL MOUTH; AC145KN4PBH1,HIPS,T2,HB	SA	1
3-1-2	5	A0646	DB93-08805B	ASSY CONNECTOR WIRE-EARTH; 1,1015,18,YEL/	SA	1
3-1-3	5	H0344	DB61-00250A	HOLDER-WIRE CLAMP; AF25M9970DBX,PA66,-,BL	SA	1
3-2	4	A1767	DB92-05686B	ASSY PCB MAIN-IN; INDOOR,AC5000B,260x108.	SA	1
3-2-1	5		DB92-02793A	ASSY FUNCTION; COMM,DVM NASA_CST,Standard	SA	1
3-2-2	5	A0694	DB92-04020A	ASSY PCB SUB; SUB,-,20*25,-,-,-,Indoor EE	SA	1
3-3	4		DB95-05009A	ASSY THERMISTOR IN-ROOM; SMH250-02L,L100,	SA	1
3-4	4		DB32-00241D	SENSOR HUMIDITY; 5V,100%RH,5%,150mm,4P,AC	SA	1
4	2		DB61-06766A	PLATE CONTROL-UP; AC145KN4PBH1,GI-SGCC,T0	SA	1
5	2	A0916	DB94-02739G	ASSY DRAIN-HOSE INSTALL; -,,-,-,-,-,GI	SA	1
5-1	3	A0912	DB94-02719B	ASSY DRAIN-HOSE; 250,NS1004PXEA,CLAMP TYP	SA	1
5-1-1	4		DB90-06130A	ASSY HOLDER-CLAMP; NS1004PXEA	SA	1
6	3		DB94-08784B	ASSY FAN IN-MODULE; 360 LRG,LRG+	SNA	1
6-1	4	M0036	DB31-00577D	MOTOR BLOWER; FMC9731SSE,97W,DC310V,NO FE	SA	1
6-2	4		DB94-05978A	ASSY FAN TURBO; AC9000K	SA	1
7	3		DB60-00406A	FASTENER-NUT FLANGE; SWRCH10A	SA	1
8	3	F0067	DB60-00427A	FASTENER-NUT WASHER; FASTENER-NUT WASHER,	SA	3
9	2		DB90-09398B	ASSY COVER-INLET; 360CST EXP	SA	1
10	3	A2523	DB96-00025Q	ASSY EVAP PARTS; AC036TN4FCH/SU	SNA	1
10-1	4		DB96-22352A	ASSY EVAP-MODULE; 360CST EU 14.0kW	SA	1
10-1-1	5	A2356	DB96-22324A	ASSY TUBE EVAP OUT; AC140KN4DNH/EU	SNA	1
10-1-1-1	6		DB60-30010D	FASTENER-NUT FLARE; -,BRASS,-,-,-,-,-,-	SA	1
10-1-1-2	6	C1284	DB63-00360D	COVER-FLARE; SH24AC6,PA66,NATURAL,A205F,5	SA	1
10-1-2	5	A2355	DB96-22159A	ASSY TUBE EVAP IN; AC140KN4DNH/EU	SNA	1
10-1-2-1	6		DB60-30010B	FASTENER-NUT FLARE; AR12RV3HEWKXNA,BRASS,	SA	1
10-1-3	5		DB62-09478A	SEAL-PIPE OUT; PE FOAM,T8,W18,L80	SA	1

No.	Lvl.	Loc.	Material Code	Description & Specification	SNA	Qty.
10-2	4	A0646	DB93-17152B	ASSY CONNECTOR WIRE-EARTH; 1,1015,12,YEL/	SA	1
10-3	4		DB61-06561B	CASE-PARTITION; 360CST, LRG+,HIPS,T1.6,L2	SA	1
10-4	4	S0242	DB81-00635A	SPRING ETC-SENSOR; DVM-SYSTEM,STS304,ID2.	SA	2
10-5	4		DB32-00239A	SENSOR TEMP; SMH200-06H,L800,10kohm,3%,25	SA	1
11	3	H0163	DB61-04509A	HOLDER EVAP; Global 4W-CST,STS430,T0.6,W2	SA	2
12	3		DB94-06097B	ASSY TRAY DRAIN-PUMP MODULE; 360 CST	SNA	1
12-1	4	S0205	DB95-04462E	SWITCH FLOAT; 70mm,3.4mm,1600mm,SMH250-02	SA	1
12-2	4		DB31-00649G	PUMP DRAIN; 400cc/min,-,1200mm,ul3266,L1	SA	1
13	3	S0019	DB60-00150A	SCREW-SPECIAL; HWH,M4,L26,ZPC(WHT),SWRCH1	SA	2
14	3	A0797	DB90-09385A	ASSY COVER-PIPE; 360CST	SA	1
15	3	H0231	DB61-06904A	HOLDER-HOSE; CAC MAX 4,PVC,T3.5,D32.43,BL	SA	1
16	3		DB61-05788A	BRACKET-CONDUIT; G-4WAY,MINI 4WAY,GI-SGCC	SA	1