

# SUBMITTAL - 24KNAS1

Job Name: _____	Date: _____
Location: _____	



Indoor Unit: **ASUH24KNAS**

Outdoor Unit: **AOUH24KNAS1**

**FEATURES**

**INDOOR UNIT:**

- Compact wall-mounted indoor unit providing superior comfort and a premium aesthetic
- Indoor unit with ProCore™ (High Corrosion Resistant Copper) coils for long-lasting protection against corrosion
- Whisper-quiet operation with sound levels as low as 31dB
- Multiple fan speed options; Auto, High, Med, Low, and Quiet.
- Special Operation modes available:
  - Economy Mode
  - Energy Saving Mode
  - Powerful Mode
  - Auto-restart function
  - Auto Changeover
- Enhanced controls platform for seamless, intuitive operation:
  - Wireless remote controller included with the indoor unit
  - Optional Wi-Fi connectivity with Airstage Mobile App monitoring and control via compatible USB WLAN adapter

**OUTDOOR UNIT:**

- Low GWP R-32 systems for reduced environmental impact
- INVERTER-driven compressor delivering high efficiency and comfort.
- Compact outdoor unit with extended line set lengths up to 82ft (25m)



7 Year Compressor, 5 Year Parts out-of-the-box Warranty.



10 Year Compressor, 10 Year Parts Warranty when registered within 60 days of installation in a residence.



12 Year Compressor, 12 Year Parts Warranty when registered within 60 days of installation in a residence and installed by a Fujitsu Elite contractor.



Due to continuous product improvements, specifications are subject to change without notice. Please log in to the Fujitsu Portal for the most up-to-date documentation <https://connect.fujitsugeneral.com>

# SUBMITTAL - 24KNAS1

## SPECIFICATIONS:

Indoor Unit			<b>ASUH24KNAS</b>			
Outdoor Unit			<b>AOUH24KNAS1</b>			
System Name			24KNAS1			
AHRI Number			217617836			
SEER2	Cooling	Btu/hW	20			
EER2		kW/kW	--			
HSPF 2 (IV) / HSPF 2 (V)	Heating	Btu/hW	10.5			
COP2		kW/kW	9 / 6.7			
		Btu/hW	3.40			
Outdoor Operation Range	Cooling		°F (°C)	50 to 122 (10 to 50)		
	Heating			5 to 75 (-15 to 24)		
Indoor Capacity	Cooling	Rated	Btu/h	22,000		
		Min.—Max.		3,800—24,000		
	Heating	Rated		24,000		
		Min.—Max.		3,900—26,000		
		47°FDB (Outdoor temp.)		14,800		
	5°FDB (Outdoor temp.) <sup>12</sup>	Rated		18,200		
		Max.		16,000		
Max.		16,000				
Outdoor Connection pipe	Size	Liquid	in (mm)	Ø1/4 (Ø6.35)		
		Gas		Ø1/2 (Ø12.70)		
	Method		FLARE			
	Pre-charge length		ft (m)	49 (15)		
	Min. length			10 (3)		
	Max. length			82 (25)		
Max. height difference		66 (20)				
Indoor Dimensions (H × W × D)	Net		in (mm)	11 × 38-9/16 × 9-7/16(280 × 980 × 240)		
	Gross			12-11/16 × 42-7/16 × 13-5/8 (322 × 1,078 × 346)		
Indoor Weight	Net		lb (kg)	28 (12.5)		
	Gross			37 (17.0)		
Outdoor Dimensions (H × W × D)	Net		in (mm)	24-7/8 × 31-7/16 × 11-7/16 (632 × 799 × 290)		
	Gross			27-1/4 × 37 × 14-3/4 (692 × 940 × 375)		
Outdoor Weight	Net		lb (kg)	79 (36)		
	Gross			88 (40)		
Indoor Fan	Airflow rate	Cooling	High	CFM (m³/h)	612 (1,040)	
			Med		489 (830)	
			Low		394 (670)	
		Quiet	306 (520)			
		Heating	High		606 (1,030)	
			Med		489 (830)	
			Low		394 (670)	
			Quiet		318 (540)	
	Type × Qty		CROSSFLOW FAN × 1			
	Motor output		W 61			
Outdoor Fan	Airflow rate	Cooling		CFM (m³/h)	1,660 (2,820)	
		Heating			1,660 (2,820)	
	Type × Qty		PROPELLER FAN × 1			
	Motor output		W 45			
Indoor Sound Pressure Level <sup>4</sup>	Cooling	High	dB (A)	49		
		Med		43		
		Low		38		
		Quiet		31		
	Heating	High		48		
		Med		42		
		Low		38		
		Quiet		32		
Outdoor Sound Pressure Level <sup>4</sup>	Cooling		55			
	Heating		55			

# SUBMITTAL - 24KNAS1

## SPECIFICATIONS:

Outdoor Refrigerant	Type		R32	
	Charge	lb oz	2 lb 10 oz	
		g	1,200	
		oz/ft	0.22	
Additional Charge Calculation		g/m	20	
Outdoor Refrigerant Oil	Type		RmM68AF	
	Amount		in <sup>3</sup> (cm <sup>3</sup> )	
Indoor Moisture removal		pints/h (L/h)	21.4 (350)	
Indoor Drain hose	Material		POLYPROPYLENE + HIGH-DENSITY POLYETHYLENE	
	Tip Diameter		in (mm)	
Indoor Operation range	Cooling		Ø17/32 (Ø13.8) (I.D.), Ø5/8 to Ø21/32 (Ø15.8 to Ø16.7) (O.D.)	
	Heating		°F (°C)	
	Heating		%RH	
Power Supply			80 or less	
Available Voltage Range			60 to 86 (16 to 30)	
Indoor Current			208/230 V~ 60 Hz	
Cooling			187—253	
Heating			9.3	
Maximum Operating Current <sup>3</sup>			9.1	
Cooling			14.4	
Heating			13.9	
Outdoor Starting Current			9.3	
MCA <sup>5</sup>			17.8	
Wiring spec. <sup>6</sup>			20	
MAX. CKT. BKR <sup>7</sup>			2.10	
Indoor Input Power	Cooling		Rated	
			Min.—Max.	
			0.13—2.75	
	Heating	47°FDB (Outdoor temp.)		Rated
				Min.—Max.
				2.07
				0.18—2.55
			Rated	
		1.50		
		Max.		
		2.30		
		Rated		
		2.13		
		Max.		
		2.13		
Indoor Power Factor	Cooling		%	
	Heating		98.2	
			98.9	

NOTES:

- Cooling: Indoor temperature of 80°F(26.67°CDB)/67°FWB(19.44°CWB), and outdoor temperature of 95°FDB(35°CDB)/75°FWB(23.9°CWB).
- Heating: Indoor temperature of 70°FDB(21.11°CDB)/60°FWB(15.56°CWB), and outdoor temperature of 47°FDB(8.33°CDB)/43°FWB(6.11°CWB).
- 17°FDB(Outdoor temp.)
- 1: Heating (17°F): Indoor temperature of 70°FDB(21.11°CDB)/60°FWB(15.56°CWB), and outdoor temperature of 17°FDB(-8.33°CDB)/15°FWB(-9.44°CWB).
- 5°FDB(Outdoor temp.)
- 2: Heating (5°F): Indoor temperature of 70°FDB(21.11°CDB)/60°FWB(15.56°CWB), and outdoor temperature of 5°FDB(-15.0°CDB)/4°FWB(-15.56°CWB).
- Test conditions are based on AHRI 210/240 2023.
- 4:
- Indoor Sound Pressure Level
- Measured values in manufacturer's anechoic chamber.
- Outdoor Sound Pressure Level
- Because of the surrounding sound environment, the sound levels measured in actual installation conditions might be higher than the specified values here.
- 3:
- Maximum Operating Current
- Maximum current is maximum value when operated within the operation range.
- The total current of indoor unit and outdoor unit.
- MCA —5: Minimum Circuit Ampacity (Calculation based on UL60335-2-40)
- 6: Selected sample based on Japan Electrotechnical Standards and Codes Committee E0005.
- Wiring spec.
- As the regulations of wire size and circuit breaker differ in each country or region, select appropriate devices complied to the regional standard.
- MAX. CKT. BKR —7: Maximum Circuit Breaker

System continues to operate below rated outdoor operation temperature range, subject to varying conditions. System has no low temperature cut out. Capacity is not tested outside of the rated temperature range.

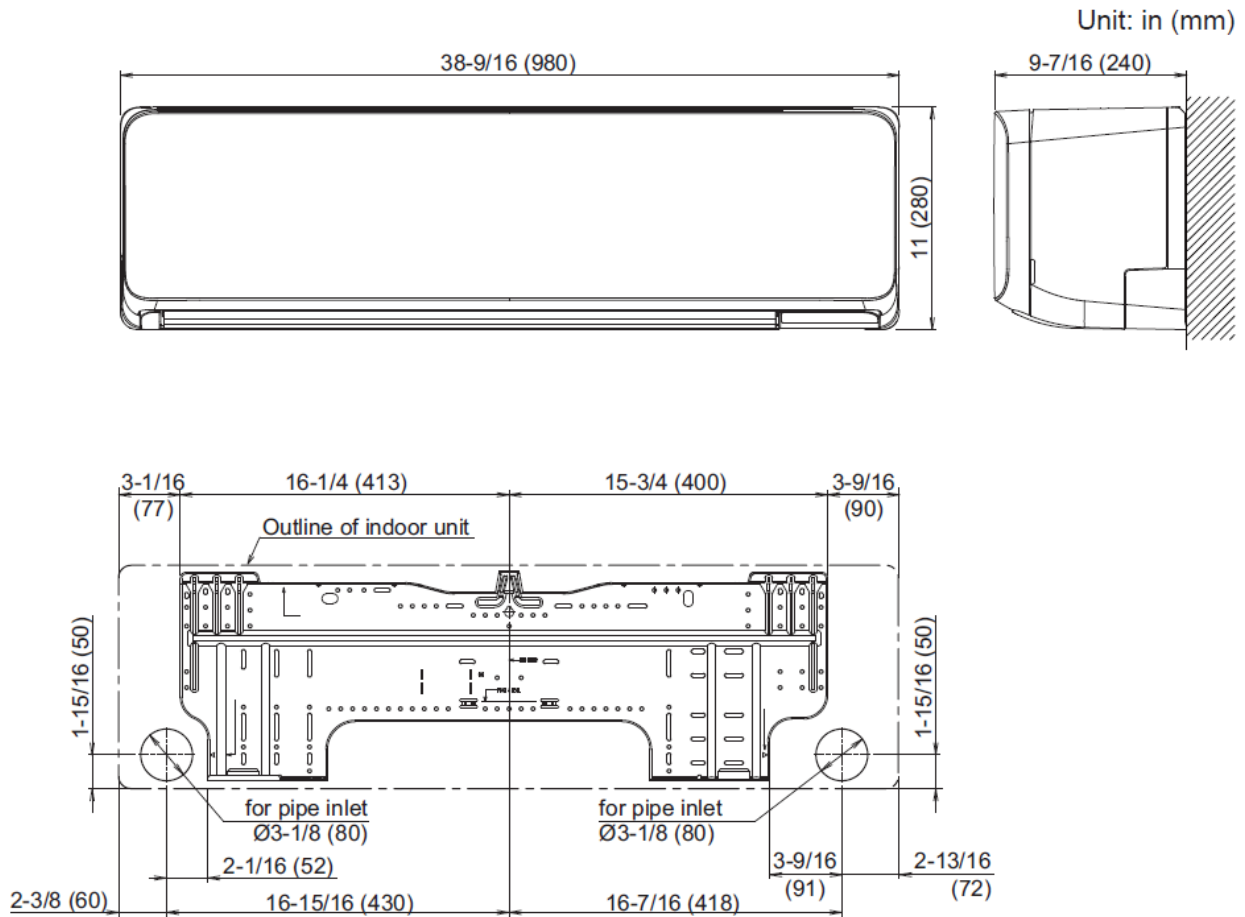
# SUBMITTAL - 24KNAS1

**ACCESSORIES:**

<b>Model Number</b>	<b>Description</b>
UTY-TFSXH4	Wi-Fi Adapter (WiFi Interface Module USB Type)
FJ-IR-WIFI-1NA	Intesis IR Wireless AC Cloud Control Interface (Intesis Home app)

# SUBMITTAL - 24KNAS1

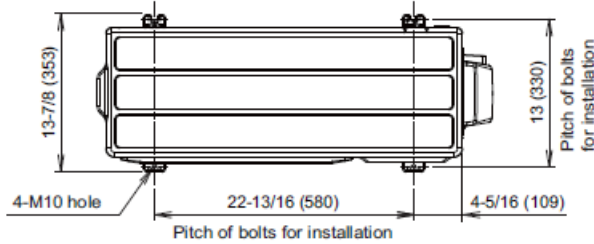
## INDOOR UNIT DIMENSIONS:



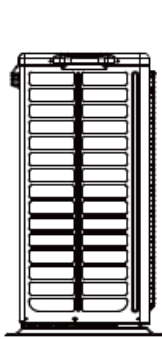
# SUBMITTAL - 24KNAS1

## OUTDOOR UNIT DIMENSIONS:

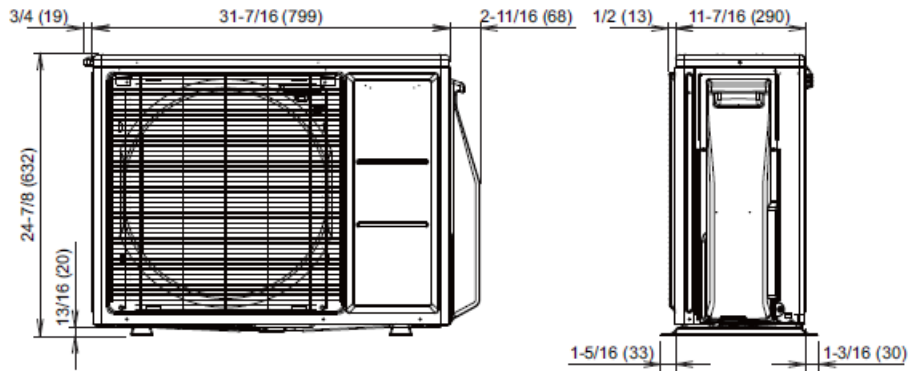
Unit: in (mm)



Top view

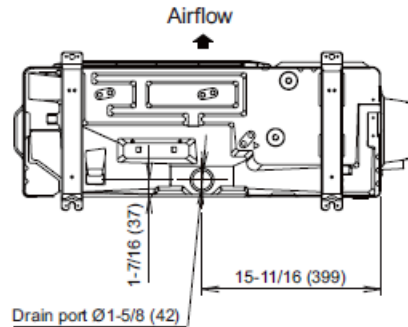


Side view

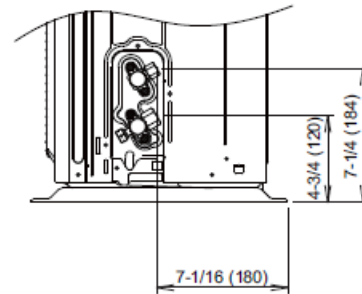


Front view

Side view



Bottom view



Side view (Valve part)

The Fujitsu logo is a worldwide trademark of Fujitsu General Limited. The Airstage logo and name is a worldwide trademark of Fujitsu General Limited and is a registered trademark in Japan, the USA and other countries or areas. Copyright 2025 Fujitsu General America, Inc. Fujitsu's products are subject to continuous improvements. Fujitsu reserves the right to modify product design, specifications and information in this brochure without notice and without incurring any obligations.