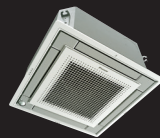




Standard Multi

2 TO 5 ZONES

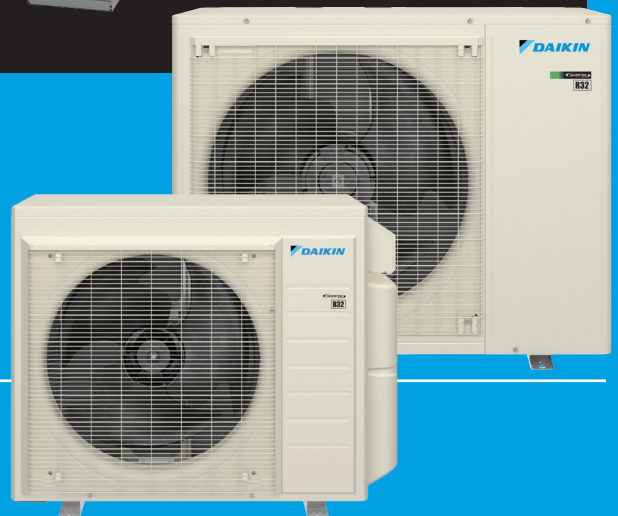


COMING SOON!  
DAIKIN VISTA R-32



# DAIKIN MXM SERIES MULTI-ZONE HEATING AND COOLING SYSTEM

1.5-4 TON, 2-5 ZONE SYSTEMS  
UP TO 21 SEER2 / UP TO 12 EER2 / UP TO 10 HSPF2  
INVERTER (VARIABLE-SPEED) COMPRESSOR  
RESIDENTIAL AND LIGHT COMMERCIAL APPLICATIONS



R32



**The air today feels just right** – amazing temperature, ideal humidity, and freshness – like right after it rains. But what makes it even better is that this ideal air is happening indoors. Inside your space. Inside, where we spend most of our time – working, playing, sleeping, living.

At Daikin, we're committed to making the air inside just as refreshing as the air outside. With Daikin efficiency, quality, and control, you can create your own ideal indoor environment. So, every day feels perfect, inside, and out.

*Perfecting The Air We Share.*



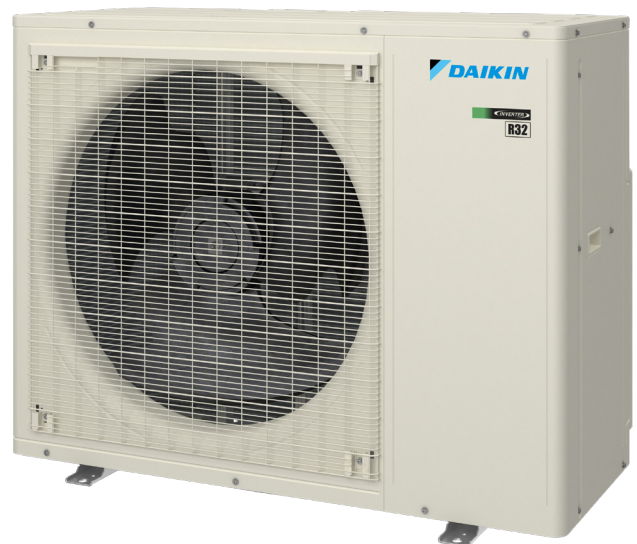
# Daikin MXM

## High-FIVE to home comfort!

Daikin MXM systems are energy-efficient and feature-rich heating and cooling systems. Harnessing the flexibility to connect up to five indoor units to just one outdoor unit, MXM systems offer a range of solutions for most any project!

At the heart of this system lies an Inverter-driven heat pump setup, renowned for its ability to deliver all-season year-round comfort and efficiency. This high-performance zoned-comfort solution offers up to five zones, including the option for a multi-position air handler for larger areas.

Whether embarking on a new construction project or transforming an existing space through renovation, MXM systems offer an innovative, robust zoning solution that adapts to the diverse climate needs across North America whole home ducted and ductless needs.



\* Complete warranty available from your local dealer or at [www.daikincomfort.com](http://www.daikincomfort.com). To receive 12-Year Parts Limited Warranty, online registration must be completed within 60 days of installation. The duration of warranty coverage may depend on the state in which you reside. Some states and provinces do not allow warranty coverage to be conditioned on registration. For a list of states and provinces that do not allow warranty coverage to be conditioned on registration, please visit [www.daikincomfort.com/warranty-information](http://www.daikincomfort.com/warranty-information) or, to request a paper copy of this information, please call us at 1-855-502-3903. Other limitations and exclusions apply, refer to complete warranty details for full list of limitations and exclusions.

# Daikin MXM Series Multi-Zone Heating and Cooling Systems:

Comfort on demand, when and  
where you need it.

**Daikin's Multi-Zone Systems** are ideal for multi-room applications desiring individual room comfort in a space-saving design. With the ability to connect two, three, four, or five indoor units to a single outdoor unit, over 1,000 combinations are possible with the choice of wall mount units, ducted units, ceiling cassette units, floor mounts or a combination. Suitable for both new build and renovation projects, Daikin Multi-Zone Systems are the smart, reliable solution for your home.



## Efficiency and Comfort:

### Energy Efficient –

» Up to 21 SEER2 / Up to 10 HSPF2  
Up to 12 EER2 / Up to 1.9 COP

### » All-Climate Performance –

- Delivers up to 100% rated cooling capacity at **115°F DB (46°C DB)**
- Over **70% heating performance to 5°F\***

\* Select heat pump models meet the **ENERGY STAR®** cold climate heat pump requirements. ENERGY STAR and the ENERGY STAR mark are registered trademarks owned by the U.S. Environmental Protection Agency. ENERGY STAR products are third party certified by an EPA-recognized Certification Body. Products that earn the ENERGY STAR prevent greenhouse gas emissions by meeting strict energy efficiency guidelines set by the U.S. Environmental Protection Agency. Proper sizing and installation of equipment is critical to achieve optimal performance. Split system air conditioners and heat pumps must be matched with appropriate coil components to meet ENERGY STAR criteria. Ask your contractor for details or visit [www.energystar.gov](http://www.energystar.gov).



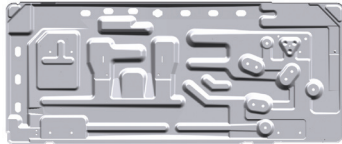
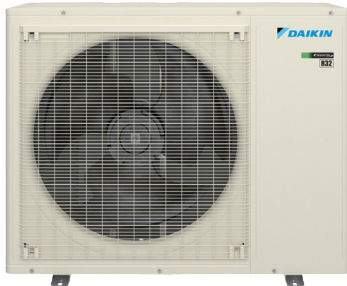
## Ideal Solution for:

- » Renovations, remodeling and new construction.
- » A perfect alternative to noisy and inefficient window or through-the-wall AC units.
- » Sunrooms, basements, attics, garages, hot or cold spaces, and more.
- » Entire homes or floors of homes.
- » Multiple zones.
- » New construction.
- » Primary living areas (main bedrooms and living rooms).
- » Rooms where floor space comes at a premium or is not available for other applications.
- » Ceiling void or attic does not allow for a viable duct run option.
- » Bigger rooms and open floor plans.
- » *Craftsman* and *Cape Cod* whole home upgrade





## Innovative Technology:



5MXM drain pan shown

### Optimized Drain Pan:

» Outdoor unit drain pans have up to 14 holes which allows for effective drainage of condensation. In some cases, this drain pan design eliminates the need for drain pan heaters, resulting in higher efficiencies in low ambient temperatures.

### Outdoor Unit Features:



**Anti-Corrosion Treatment on Heat Exchanger**



**Quick Warming Function** – Preheats the compressor to shorten the time required to discharge warm air.



**Automatic Defrosting** – Sensor performs automatic defrosting of the outdoor heat exchanger if necessary, ensuring optimum heating performance.



**Outdoor Unit Quiet Operation** – Outdoor unit sound levels can be reduced by 3 dB(A) for times when quieter operation is needed.



**Intelligent Defrost Mode\*** – The outdoor unit will enable this mode to help prevent frost/ice from building up in cold climate conditions. It will also help with longer heating operation time for additional comfort for occupants (compared to HVAC systems without this function).

\* Available on 5MXM only.



Select heat pump models meet the **ENERGY STAR**® cold climate requirements. Please refer to product engineering manuals for additional information or visit [www.energystar.gov](http://www.energystar.gov). Proper sizing and installation of equipment is critical to achieve optimal performance. Split system air conditioners and heat pumps must be matched with appropriate coil components to meet ENERGY STAR criteria. Ask your contractor for details or visit [www.energystar.gov](http://www.energystar.gov).

### Knowledge is Power

The current efficiency standards are based on new metrics (SEER2/EER2/HSPF2) derived from new test procedure (M1) rather than the historical metrics (SEER/EER/HSPF) from the old test procedure (M). Testing procedures and requirement for developing efficiency ratings become more stringent with the new 2023 DOE regulations. The prior M testing procedure was replaced by the M1 testing procedure for 2023 compliance.

### Why is Coefficient Of Performance (COP) Important?

The COP of a heat pump is the ratio of:

$$\text{COP} = \frac{\text{energy out}}{\text{energy in}}$$

When the COP is >1, the result is a system providing more heating energy than energy consumed. As the COP increases, the higher the efficiency — resulting in low utility costs.

Up to <b>21</b> <b>SEER2</b>	Up to <b>12</b> <b>EER2</b>
Up to <b>10</b> <b>HSPF2</b>	Up to <b>1.9</b> <b>COP</b>

(Coefficient of Performance)

Daikin MXM Series  
Outdoor Unit Efficiency Ratings

This rating is important when considering the efficiencies of oil and gas furnaces.

**COP** | | | | **Daikin MXM**  
Up to 1.9  
(Outdoor units)

## CMXV: Multi-position air handler for homes needing a broad ducted solution.



### Features and benefits:

- » Traditional indoor style with modern comfort at the core.
- » **Wi-Fi integration** for true zoned comfort and control.
- » Optimized to fit existing ductwork designs.
- » Simple control installation.
- » **Heat Strip** connection for **cold climate** back up.
- » Improve indoor air quality with large media filters or *Indoor Air cleaner integration*.
- » Flexible **Up, Down, Left or Right** installation.
- » Install as many air handlers as needed to optimize home comfort.
  - EG - Mix 2 air handlers + a mix of other indoor unit styles as needed.
- » No Daikin *ONE* translation adaptor needed.



### Control Options:

- » Works with the **Daikin ONE Touch and Daikin ONE+ smart thermostats only!**
- » Compatible with *SkyportHome*

## FVXV: Discreet and attractive floor-mounted unit for efficiency and comfort.



Experience ultimate climate control with the new Wi-Fi Inside functionality. This built-in technology helps enhance your living space with comfort control from the palm of your hand or wherever you are.

### Features and benefits:

- » **Operating Mode Display:** Quickly identify the system's current operating mode at a glance, ensuring effortless usability. The clear display eliminates guesswork, making operation simple and intuitive.
- » **Three-Way Airflow Direction:** Enjoy flexible comfort with discharge airflow that can be directed both upward and downward for optimal efficiency. This versatile design ensures even air distribution and a more comfortable indoor environment.
- » **Heat Plus Function:** Deliver cozy warmth by simulating radiant heat for 30 minutes. By controlling air volume, it quickly warms the area near the unit for enhanced comfort.
- » **Floor Warming Function:** Optimizes convection by directing warm air from the bottom of the unit for effective floor heating. By closing upper flap, airflow speed increases to deliver heat farther across the floor surface for enhanced comfort.
- » **Program Dry Function:** This feature prioritizes reducing the humidity levels in a room without causing fluctuations in room temperature.



### Control Options:

- » Compatible with *SkyportHome* Includes **handheld controller**
- » Compatible with **BRC073A6 Navigational Controller**
- » Works with the **Daikin ONE Touch and Daikin ONE+ smart thermostats**

## FTXV/CTXV: Discreet wall-mounted unit providing high efficiency and comfort.



Experience ultimate climate control with the new Wi-Fi Inside functionality. This built-in technology helps enhance your living space with comfort control from the palm of your hand or wherever you are.

### Features and benefits:

- » Discreet, **stylish front panel** blends easily with the wall, and matches all interior decors.
- » **Dry program** allows humidity levels to be reduced without variations in room temperature.



### Control Options:

- » Compatible with *SkyportHome* Includes **handheld controller**
- » Compatible with **BRC073A6 Navigational controller**
- » Works with the **Daikin ONE Touch and Daikin ONE+ smart thermostats**

## FDMA/CDMA: Ducted Concealed Unit capable of up to .6 external static pressure (ESP).



### Features and benefits:

- » **Built in refrigerant leak detection** enhances safety and reliability by continuously monitoring for refrigerant leaks within the unit.
- » **Higher external static pressure capabilities** allow for longer duct runs and easily implementing up to MERV 13 filters (compared to units with lower static pressure).
- » **Drain pan inspection** port makes it easy to observe drain pan conditions.
- » **Rear or bottom return air configurations** for installation flexibility.
- » Outside air integration possible.

### Control Options:

- » Compatible with *SkyportHome*
- » Compatible with **BRC1NRV71 Navigational Controller**
- » Works with the **Daikin ONE Touch and Daikin ONE+ smart thermostats**

The logo for R32 refrigerant, featuring the letters 'R32' in white on a teal square background.

# The right choice to replace R-410A.

## Proven. Easy. Available. Efficient.

**Step into the future of home comfort** with Daikin's line of residential products. As a global leader in air conditioning, Daikin is committed to innovation that enhances your home comfort with the use of low global warming potential (GWP) R-32 refrigerant. Our new R-32 products have been designed to meet efficiency, reliability, and comfort needs, while helping reduce impact on the environment with a lower GWP refrigerant compared to R-410A.

- » **Innovation:** With R-32's lower global warming potential (compared to previous R-410A) you can reduce your impact on the environment while enjoying outstanding cooling and heating at home.
- » **Efficiency:** Daikin's use of R-32 refrigerant and our game-changing inverter technology is designed to provide energy efficiency for low utility bills and energy consumption.
- » **Durability:** Daikin's legacy of over 100 years ensures each product is built to last, delivering reliable performance and comfort year after year.

» **Intelligent:** Many Daikin systems integrate with smart home technologies, making it easy to control and optimize your home's climate. Additionally, for homeowners who want to step their indoor comfort up even more, ask about the Daikin systems that connect to the Daikin *ONE* thermostats, *SkyportCare*, and how to address other indoor air quality concerns.

» **Peace of Mind:** Confident in our quality, Daikin offers robust limited warranties\*, ensuring your investment brings long-term comfort and peace of mind.



### Aligning with Goals of:

- » **Lower GWP refrigerant — reduce impact at the source:** Utilizing a refrigerant with lower Global Warming Potential (GWP) compared to conventional refrigerants, like R-410A.
- » **Sustainability:** Easy to top off, or clean and reuse on-site and easy to reclaim and recycle.

\* Complete warranty details are available from your local dealer/contractor or at [www.daikincomfort.com](http://www.daikincomfort.com)



## You're always in control.

### Individual comfort and control

Daikin systems have an available infrared remote controller allowing you to access all functions at the click of a button. Most indoor units have Wi-Fi built in and connect directly to the *SkyportHome* app.

### From anywhere in the world. Or your living room.

It can happen to anyone. You forgot to change the temperature of your heat pump system or air conditioner before leaving the house, or you will be delayed returning home and wish to avoid needlessly heating or cooling your home. What in the past would have resulted in wasted energy is no longer a problem. With the *SkyportHome* app, you are always in control. You can use your tablet or smartphone to access your Daikin system via the internet.

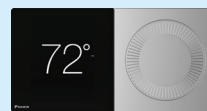


### Daikin ONE Touch Smart Thermostat



A great control option for Daikin single and multi-zone systems. With customizable settings and the power to wirelessly control the system from anywhere, homeowners may never want to change their thermostat manually again. However, the touchscreen interface supports a user-friendly experience when they do. Voice control is also possible with compatible Amazon and Google devices. The Daikin *ONE* touch thermostat can be linked via Wi-Fi to the *SkyportHome* app for control from an iOS or Android phone or tablet.

### Daikin ONE+ Smart Thermostat



The Daikin *ONE+* smart thermostat is now available for single and multi-zone indoor unit models. With the new translation adaptor, connecting the Daikin *ONE+* smart thermostat provides several user features including remote monitoring, control and geofencing using the *SkyportHome* app, Google, and Amazon voice assistants. Learn more at [www.daikincomfort.com](http://www.daikincomfort.com).

### Daikin DKN Plus Interface



The new Daikin *DKN Plus* Interface (AZAI6WSPDKC) enables the energy-efficient control of Daikin air conditioners by a third-party thermostat or an automation system. With this interface, third-party devices or systems can control the Single-Zone and Multi-Zone indoor units through the DKN NA App, Cloud API, Modbus®, BACnet® MS/TP, or thermostat relay contacts. Learn more at [www.daikincomfort.com](http://www.daikincomfort.com).

BACnet® is a trademark of ASHRAE

### Daikin ONE Lite Connected Thermostat

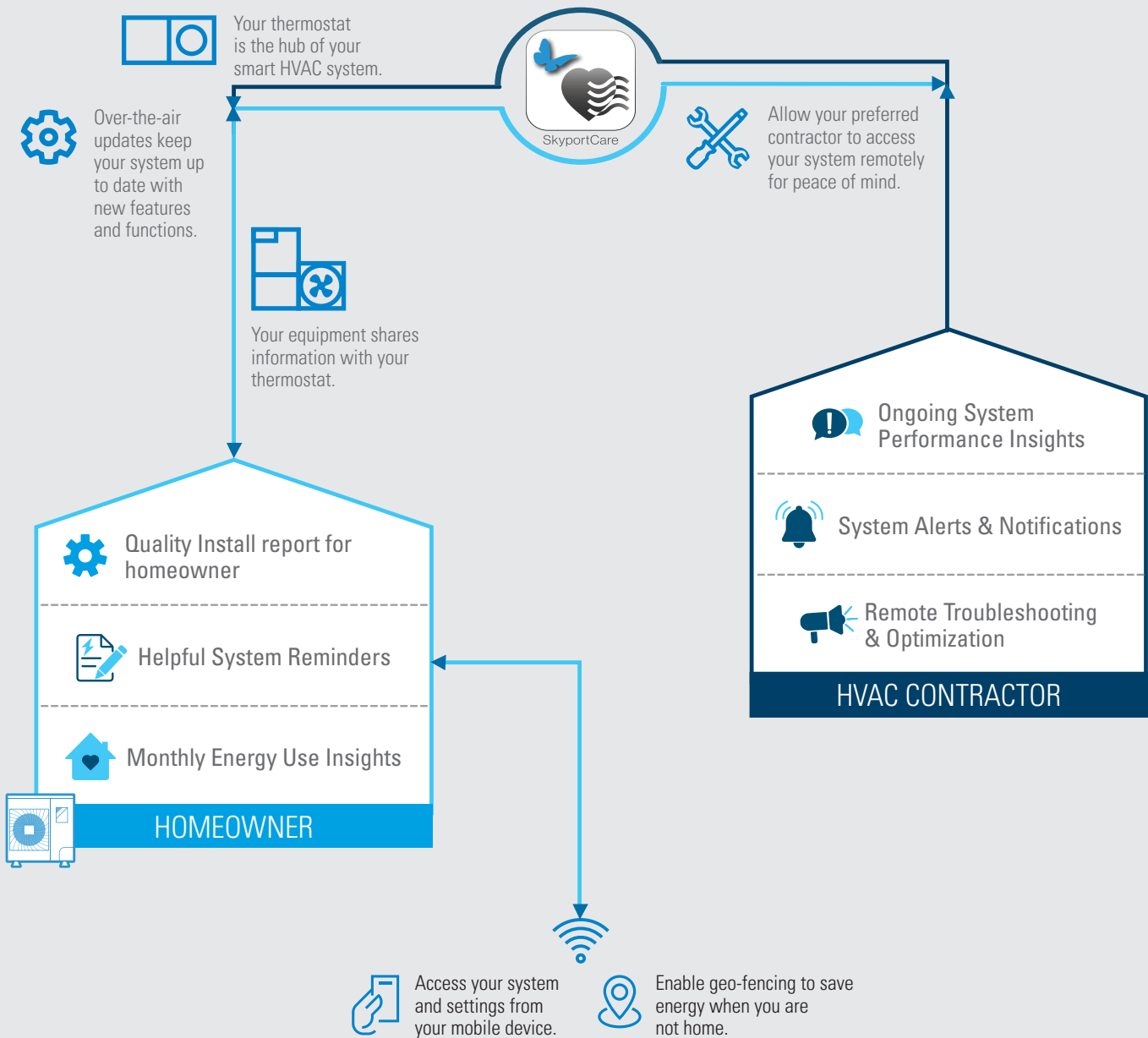


The Daikin *ONE* lite connected thermostat is a perfect solution for most Daikin single and multi-zone products when a wall-mounted smart thermostat is needed. The Daikin *ONE* lite connected thermostat can be linked via Wi-Fi to the *SkyportHome* app for control from an iOS or Android phone or tablet.

**NOTE:** The handheld remote that comes with some indoor units should not be used together with the Daikin *ONE* thermostats.

# CONNECTED with *SkyportCare*

*SkyportCare* creates a digital connection between your Daikin heating, ventilation, and air conditioning (HVAC) system and your servicing contractor. You can enjoy peace of mind not only from verification of system installation\* but from a 24/7 – 365 connection to Daikin Comfort Technologies cloud\*\*. With *SkyportCare* access, your servicing contractor has access to system health alerts, performance insights, diagnostics, and even remote access to your system(s) settings — with your approval. Unlock the benefits and peace of mind of a connected heating and cooling system today.



\* *Quality Install* verifies system installation of Daikin unitary inverter products

\*\* Requires continuous internet connection

Outdoor Units

Outdoor Units	2-Port (2MXM18AVJU9)**	3-Port (3MXM24AVJU9)**	4-Port (4MXM36AVJU9)**	5-Port (5MXM48AVJU9)**
	Efficiency	Efficiency	Efficiency	Efficiency
Non-Ducted	21 SEER2 / 10 HSPF2 / 12 EER2*	21 SEER2 / 10 HSPF2 / 12 EER2*	20 SEER2 / 9.5 HSPF2 / 10 EER2*	20 SEER2 / 9.5 HSPF2 / 10 EER2*

Outdoor Units	2-Port (2MXM18AVJU8)	3-Port (3MXM24AVJU8)	4-Port (4MXM36AVJU8)	5-Port (5MXM48AVJU8)
	Efficiency	Efficiency	Efficiency	Efficiency
Non-Ducted	21 SEER2 / 10 HSPF2 / 12 EER2*	21 SEER2 / 10 HSPF2 / 12 EER2*	20 SEER2 / 9.5 HSPF2 / 10 EER2*	20 SEER2 / 9.5 HSPF2 / 10 EER2*
Ducted	16 SEER2 / 8.5 HSPF2 / 10 EER2	16 SEER2 / 8.5 HSPF2 / 9.8 EER2	15.2 SEER2 / 8.1 HSPF2 / 8.0 EER2	14.5 SEER2 / 8.2 HSPF2 / 8.2 EER2
Mixed	18.5 SEER2 / 9.3 HSPF2 / 11 EER2	18.5 SEER2 / 9.3 HSPF2 / 10.9 EER2	17.6 SEER2 / 8.8 HSPF2 / 9.0 EER2	17.25 SEER2 / 8.86 HSPF2 / 9.1 EER2*



\* Select heat pump models meet the **ENERGY STAR**<sup>®</sup> cold climate heat pump requirements. ENERGY STAR and the ENERGY STAR mark are registered trademarks owned by the U.S. Environmental Protection Agency. ENERGY STAR products are third party certified by an EPA-recognized Certification Body. Products that earn the ENERGY STAR prevent greenhouse gas emissions by meeting strict energy efficiency guidelines set by the U.S. Environmental Protection Agency. Proper sizing and installation of equipment is critical to achieve optimal performance. Split system air conditioners and heat pumps must be matched with appropriate coil components to meet ENERGY STAR criteria. Ask your contractor for details or visit [www.energystar.gov](http://www.energystar.gov).

\*\* AVJU9 models match only with wall mount units.

Indoor Units

Indoor Units / Dimensions (HxWxD)	Unit Class					
	07	09	12	15	18	24
FTXV Wall Mount	CTXV07AVJU9	FTXV09AVJU9	FTXV12AVJU9	FTXV15AVJU9	FTXV18AVJU9	FTXV24AVJU9
	11-1/4" x 30-5/16" x 8-3/4"			11-5/8" x 39" x 10-3/8"		
FVXV Floor Mount / Low Wall Mount	–	FVXV09AVJU(W/T)9	FVXV12AVJU(W/T)9	FVXV15AVJU(W/T)9	FVXV18AVJU(W/T)9	–
	–	23-5/8" x 29-1/2" x 9-3/8"				–
FDMA Ducted Concealed	CDMA07AVJU9	FDMA09AVJU9	FDMA12AVJU9	FDMA15AVJU9	FDMA18AVJU9	FDMA24AVJU9
	9-5/8" x 27-9/16" x 31-1/2"			9-5/8" x 39-3/8" x 31-1/2"		
CMXV Multi Position AHU	–	–	CMXV12AVJU9	–	CMXV18AVJU9	CMXV24AVJU9
	–	–	45" x 17-1/2" x 21"			
VISTA (Ceiling Cassette)	N/A					
EMURA (Wall Mount)						



## Daikin *SplitXpress* Selection Tool

The new interactive *SplitXpress* mobile app and website provide a complete product selection tool to streamline system selection for single and multi-zone projects. Users can create equipment selections and add accessories / pricing details to quickly share quotes with customers. Available for free on the App Store (iOS) and Google Play (Android), and at <https://splitxpress.daikincity.com>.



**BUILD YOUR SYSTEM | DISCOVER REBATES | FIND A CONTRACTOR | LEARN MORE ABOUT DAIKIN:**

[www.daikincomfort.com](http://www.daikincomfort.com)



### WARNINGS:

- » Always use a licensed installer or contractor to install this product. Do not try to install the product yourself. Improper installation can result in water or refrigerant leakage, electrical shock, fire or explosion.
- » Use only those parts and accessories supplied or specified by Daikin. Ask a licensed contractor to install those parts and accessories. Use of unauthorized parts and accessories or improper installation of parts and accessories can result in water or refrigerant leakage, electrical shock, fire or explosion.
- » Read the Product Manual carefully before using this product. The Product Manuals provide important safety instructions and warnings. Be sure to follow these instructions and warnings.
- » For any inquiries, contact your local Daikin sales office.

Android, Google, Google Assistant, and all related logos are trademarks of Google LLC or its affiliates. Amazon, Alexa and all related logos are trademarks of Amazon.com, Inc. or its affiliates. App Store® is a registered trademark of Apple Inc.

### ADDITIONAL INFORMATION

Before purchasing this appliance, read important information about its estimated annual energy consumption, yearly operating cost, or energy efficiency rating that is available from your retailer.

Our continuing commitment to quality products may mean a change in specifications without notice.  
© 2026 DAIKIN COMFORT TECHNOLOGIES NORTH AMERICA, INC.  
Houston, Texas · USA · [www.daikincomfort.com](http://www.daikincomfort.com)

**R32**



Select heat pump models meet the **ENERGY STAR®** cold climate requirements. Please refer to product engineering manuals for additional information or visit [www.energystar.gov](http://www.energystar.gov). ENERGY STAR and the ENERGY STAR mark are registered trademarks owned by the U.S. Environmental Protection Agency. ENERGY STAR products are third party certified by an EPA-recognized Certification Body. Products that earn the ENERGY STAR prevent greenhouse gas emissions by meeting strict energy efficiency guidelines set by the U.S. Environmental Protection Agency. Proper sizing and installation of equipment is critical to achieve optimal performance. Split system air conditioners and heat pumps must be matched with appropriate coil components to meet ENERGY STAR criteria. Ask your contractor for details or visit [www.energystar.gov](http://www.energystar.gov).

CB-MXM\_R32\_04-26