



**Submittal Data Sheet**

Daikin Polara 3.0-Ton Wall Mounted Cooling Only System  
FTX36WVJU9RK36WMVJU9

**FEATURES**

- "Powerful Operation Mode Econo Mode Program Dry Function Intelligent Eye Auto Fan Speed Wide Angle Louvers Dual Flap System Comfort Mode 3-D Airflow Low Ambient Cooling Quiet indoor and outdoor unit operation Auto Changeover and auto restart Self Diagnosis"

**INDOOR UNIT**



**BENEFITS**

- "For rooms with no false ceiling nor free floor space 10-year parts limited warranty for residential/commercial applications Cooling operation down to -22 F outside temperature Error codes display for fast and easy fault diagnosis Long lasting Titanium Apatite air filter Easy to clean flat panels Econo mode reduces power consumption."

**OUTDOOR UNIT**





Submittal Data Sheet

Daikin Polara 3.0-Ton Wall Mounted Cooling Only System  
FTX36WVJU9RK36WMVJU9

SYSTEM PERFORMANCE

Indoor Unit Model No.	FTX36WVJU9	Indoor Unit Name:	Daikin POLARA 3.0T Wall Mounted Type IDU
Outdoor Unit Model No.	RK36WMVJU9	Outdoor Unit Name:	Daikin POLARA - 3.0-Ton, Cooling Only, Ductless ODU
Rated Cooling Capacity (Btu/hr):	33,200	Rated Cooling Conditions:	Indoor (°F DB/WB): 80 / 67 Ambient (°F DB/WB): 95 / 75
Sensible Capacity (Btu/hr):		Rated Piping Length(ft):	25
Max/Min Cooling Capacity (Btu/hr):	33,200 / 10,200	Rated Height Difference (ft):	0.00
Cooling Input Power (kW):			
SEER2 (Non-Ducted/Ducted):	15.90 /		
EER2 (Non-Ducted/Ducted):	9.10 /		
Rated Heating Capacity (Btu/hr):	35,200	Rated Heating Conditions:	Indoor (°F DB/WB): 70 / 60 Ambient (°F DB/WB): 47 / 43

SYSTEM DETAILS

Refrigerant Type:	R-410A	Cooling Operation Range (°F DB):	50 - 115
Holding Refrigerant Charge (lbs):	3.64	Heating Operation Range (°F WB):	5 - 64
Additional Charge (oz/ft):	0.32	Max. Pipe Length (Vertical) (ft):	66
Pre-charge Piping (Length) (ft):	33	Cooling Range w/Baffle (°F DB):	-22 - 115
Max. Pipe Length (Total) (ft):	99		
Max Height Separation (Ind to Ind ft):	0		

## Submittal Data Sheet

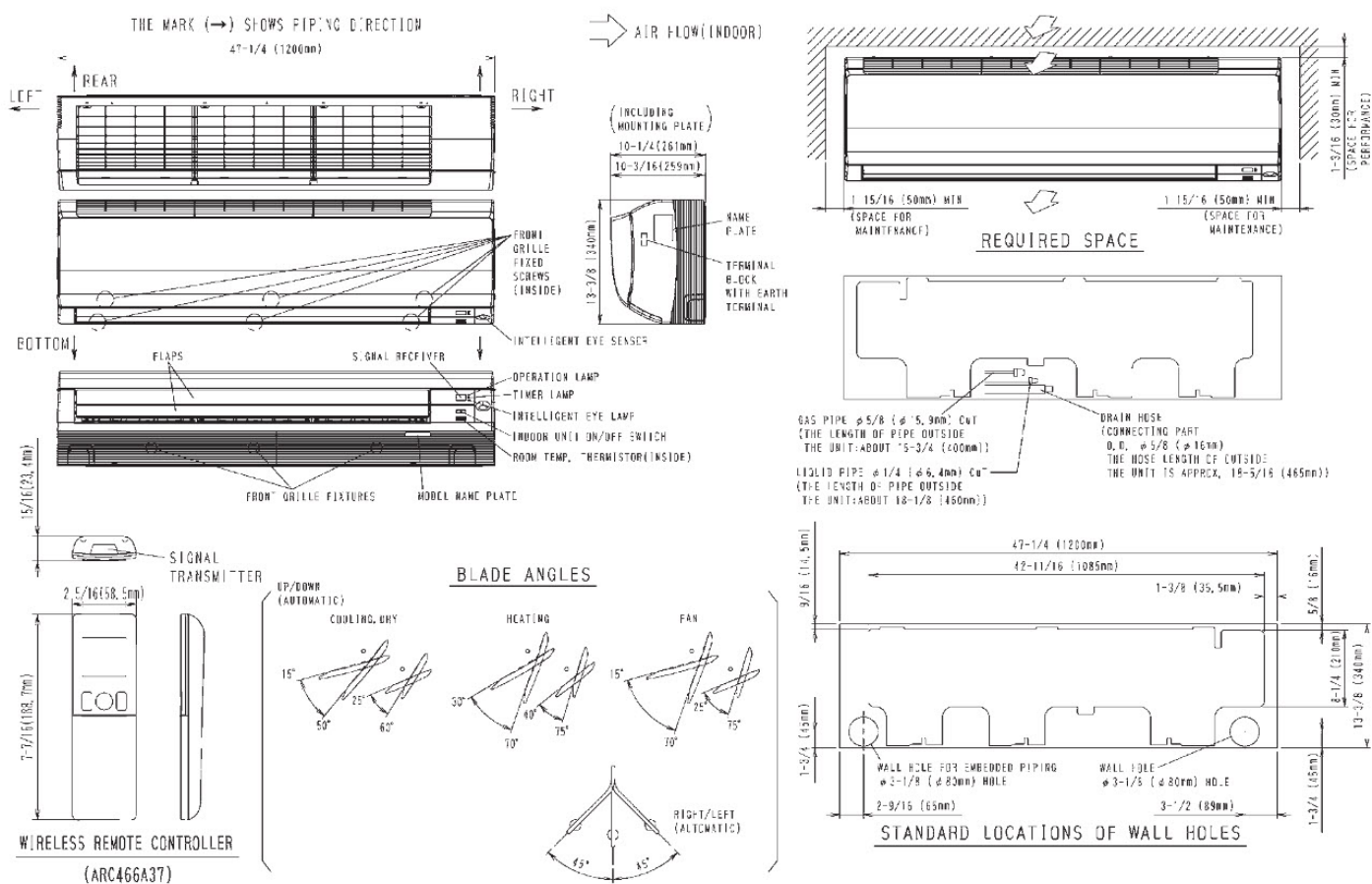
## Daikin Polara 3.0-Ton Wall Mounted Cooling Only System

FTX36WVJU9RK36WMVJU9

## INDOOR UNIT DETAILS

Power Supply (V/Hz/Ph):	208/230 / 60 / 1	Airflow Rate (H/M/L/SL) (CFM):	915/742/572/512
Power Supply Connections:		Moisture Removal (Gal/hr):	
Min. Circuit Amps MCA (A):		Gas Pipe Connection (inch):	5/8
Max Overcurrent Protection (MOP) (A):		Liquid Pipe Connection (inch):	1/4
Dimensions (HxWxD) (in):	13-3/8 x 47-1/4 x 10-3/16	Condensate Connection (inch):	
Net Weight (lb):	38	Sound Pressure (H/M/L/SL) (dBA):	54/47/40/37
Ext. Static Pressure (Rated/Max) (inWg):	/	Sound Power Level (dBA):	

## DIMENSIONAL DRAWING - INDOOR UNIT

**FTX30/36WVJU9**

# Submittal Data Sheet

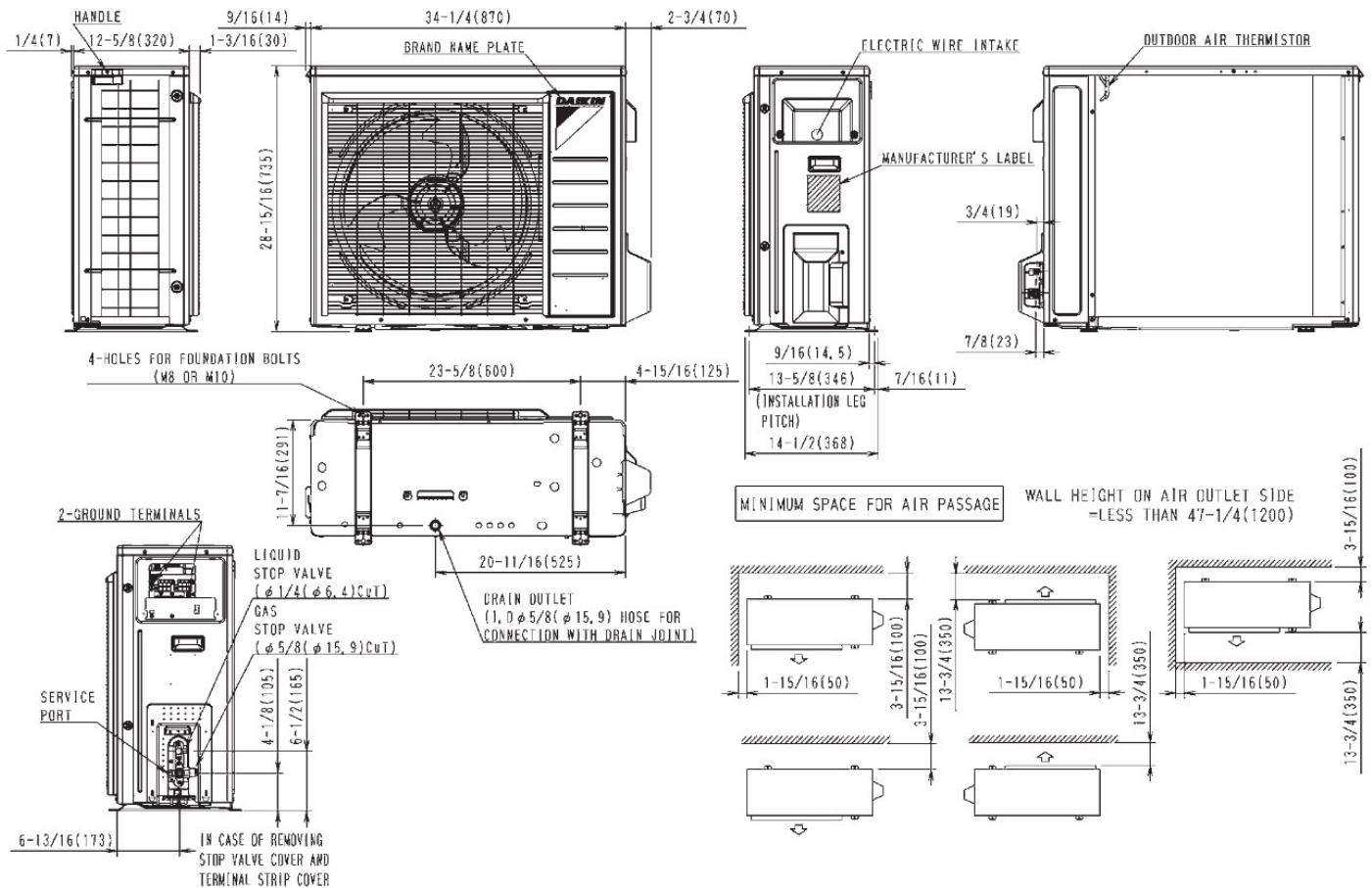
Daikin Polara 3.0-Ton Wall Mounted Cooling Only System  
FTX36WVJU9RK36WMVJU9

## OUTDOOR UNIT DETAILS

Power Supply (V/Hz/Ph):	208/230 / 60 / 1	Compressor Stage:	Inverter
Power Supply Connections:		Capacity Control Range (%):	-
Min. Circuit Amps MCA (A):	16.6	Airflow Rate (H) (CFM):	2811
Max Overcurrent Protection (MOP) (A):	20	Gas Pipe Connection (inch):	5/8
Max Starting Current MSC(A):		Liquid Pipe Connection (inch):	1/4
Rated Load Amps RLA(A):	16.3	Sound Pressure (H) (dBA):	59
Dimensions (HxWxD) (in):	28-15/16 x 34-1/4 x 12-5/8	Sound Power Level (dBA):	
Net Weight (lb):	132		

## DIMENSIONAL DRAWING - OUTDOOR UNIT

RK30/36WMVJU9, RX30/36WMVJU9





**Submittal Data Sheet**

Daikin Polara 3.0-Ton Wall Mounted Cooling Only System  
FTX36WVJU9RK36WMVJU9

INDOOR ACCESSORIES

PART NUMBER	DESCRIPTION	INCLUDED
AZAI6WSCDKB	DKN Residential Cloud Wi-Fi Adaptor for Single- and Multi-Zone System (S21)	No
AZAI6WSPDKC	DKN Plus Interface	No
BRC944B2-A08	Wired Remote Controller kit	No
BRCW901A03	BRC944B2 CONTROL CABLE, 10FT	No
BRCW901A08	Wired Remote Controller Cord - 8m/26ft	No
BRP072A43	Daikin Comfort Control WiFi Adaptor	No
DACA-CP1-1	Mini Aqua Condensate Pump	No
DACA-CP4-1	MINI WHITE PUMP KIT 100-250V	No
DTST-LTE-LA-A	Daikin One Lite (with Translation Adaptor for S21 only)	No
DTST-ONE-ADA-A	Daikin One+ Smart Thermostat for VRV, SkyAir, Single- and Multi-Zone System	No
KRP928BB2S	RA Interface Adaptor for DIII-Net -	No

OUTDOOR ACCESSORIES

PART NUMBER	DESCRIPTION	INCLUDED
DACA-WB-3	Powder-Coated Wall-Mounted Bracket	No
KEH063A4E	Daikin BML DrainPan Heater Large	No
KKG063A42	Back protection wire net	No
KPW063B4	Air direction adjustment grille	No
RAQAHLGD1	Rear Coil Guard BML	No