

RSA-24V LED Strobe Light

The RSA-24V is a remote LED strobe light with audible. It is ideal for applications that require timing, paging and alarm signalling, including equipment malfunction alert and security warning. The strobe has multiple user selectable flash patterns and the audible can be turned on or off independently of the strobe. The device comes with a wall mounting bracket for easy installation. It may be used indoors or outdoors. Ideal for connecting to the relay of an SCC, DCC, QCC or FCS Controller or an LPT-A, LPT-B or LPT-M transmitter.

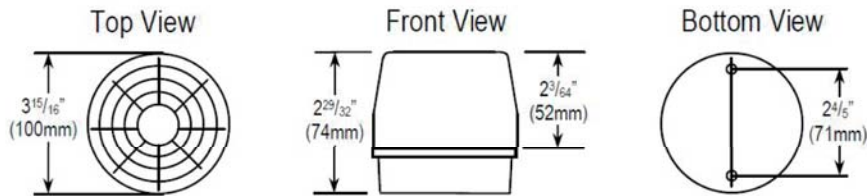
Introduction:

The RSA-24V offers many functions. It has an operating life of 50,000 hours - over 160 times that of a regular strobe light.

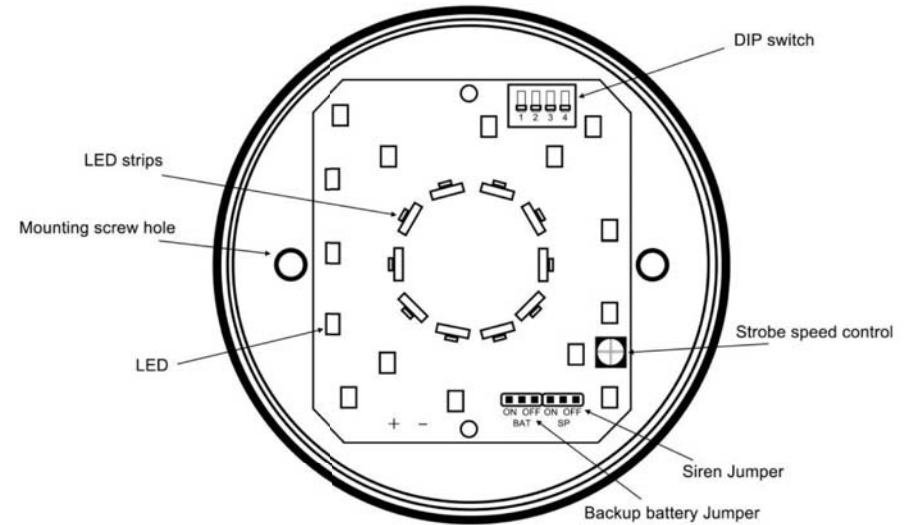
With 15 - 55 LEDs (depending on setting), the light is visible from various directions. A 9V backup battery (not included) makes the strobe ideal for outdoor lighting applications.

Choose from 6 selectable strobe patterns with adjustable strobe speed.

Dimensions:



Overview:



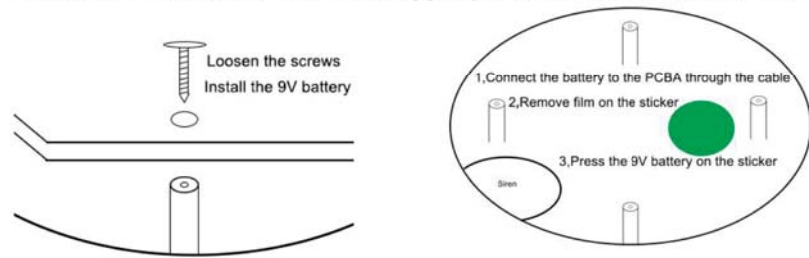
Installation:

1. Please read this manual carefully and keep it for future reference.
2. Be sure to use the LED strobe light within the given electrical limits.
3. Decide where the LED strobe light is to be mounted. Use a pencil to mark the location of the two mounting screws.
4. Drill a hole through the wall or surface where the LED strobe light is to be mounted. Run the ground (black) and power (red) wires through the wall.
5. Connect the wires to their respective locations on an alarm control panel or other security panel.
6. Remove the lens and mount the LED strobe light to the surface using the two included mounting screws with rubber "O" rings. If screws are fastened too tightly, the "O" rings will be damaged.

7. Select the flash pattern using the DIP Switch and adjust the speed using the strobe speed control (clockwise to increase, counterclockwise to decrease).
8. Set the siren(optional) to on or off using the siren jumper.
9. If needed, install backup battery. (See below.)
10. Replace lens. If lens is fastened too tightly, the “O” ring will be damaged.

Backup Battery(no battery include)

- 1.loosen the PCBA screw and take off the PCBA,
- 2.connect the battery to the PCBA through the cable,
- 3.remove the sticker film and press the battery on the sticker
- 4.screw the PCBA back ,set the battery jumper to ON .then install the lens.



Specifications

Power Requirements	24 VDC or 24 VAC
Current Draw	300 mA @ 24 VDC
Backup Battery	9V, not included
Sound Pressure Level	100 dB @ 30 cm (100 dB @ approx. 2 ft)
Tone/Pulse Rate	Continuous wobble
Operating Temperature	-20°C to 65°C (-4°F to 149°F)
IP Rating	IP65
Lens Colour	Red

Flash Pattern Configuration

Be noticed: only change Flash Pattern when power disconnected

DIP switch position	Flash Pattern type	image
	<p>Strobe</p> <p>LEDs flash on and off continuously. (Default setting)</p>	
	<p>Rotate Clockwise</p> <p>Light rotates clockwise in a circular fashion continuously. (Beacon)</p>	
	<p>Steady ON</p> <p>All LEDs stay on. Ideal for continuous lighting applications.</p>	
	<p>Flash with Progressive ON</p> <p>LEDs turn on progressively clockwise until all LEDs are lit (sweep), and then turn off.</p>	
	<p>Rotate Back and Forth</p> <p>LED groups light up one at a time, rotating clockwise and counterclockwise.</p>	
	<p>Flash with Progressive ON/OFF</p> <p>LEDs turn on progressively clockwise (sweep), then turn off progressively counterclockwise.</p>	