



**COMPONENT  
HARDWARE®**

1890 Swarthmore Avenue, PO Box 2020, Lakewood, NJ 08701  
Phone: 800-526-3694, 732-363-4700, Fax: 732-364-8110  
[www.componenthardware.com](http://www.componenthardware.com)

**PROJECT NAME:** \_\_\_\_\_

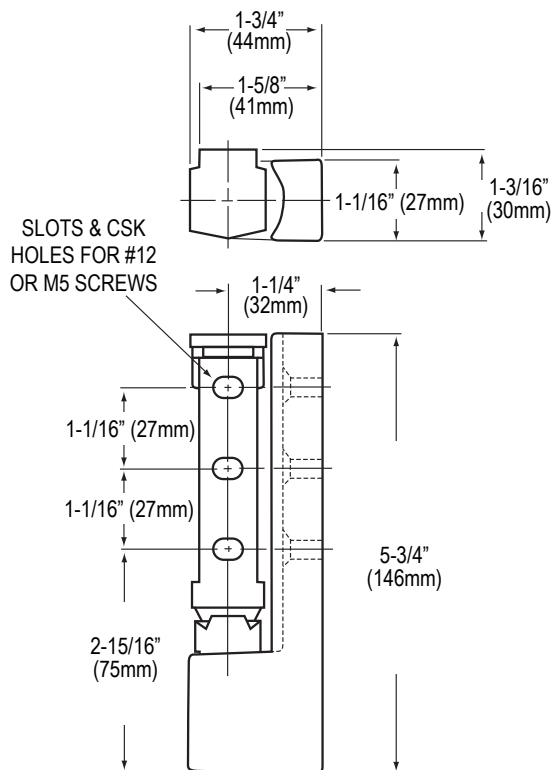
**LOCATION:** \_\_\_\_\_

**SPECIFIER ITEM NO.** \_\_\_\_\_ **QTY:** \_\_\_\_\_

**COMPONENT HARDWARE PART NO.** \_\_\_\_\_

Component Hardware® 1-5/8" Offset 5-3/4" L  
Chrome Plated Die Cast Lift-Off Self-Closing  
Edgmount Hinge

**R50-2850**



*Dimensions shown in inches (mm) are for reference only and are subject to change.*

Approximate shipping weight - 0.5 lb

1-5/8" Offset 5-3/4" L Chrome Plated Die Cast Lift-Off Self-Closing Edgmount Hinge

**Specifically designed for refrigerated door applications**

- Ideal for reach-in refrigerators and doors equipped with magnetic gasketing
- High pressure die cast zamak construction
- Polished chrome plated finish
- 1-5/8" offset
- 5-3/4" L x 1-3/16" W x 1-3/4" H overall
- Lift-off design permits doors to be removed without tools
- Self-closing cam-rise action
- Adjustable...to compensate for gasket wear
- Overclose feature...provides constant door pressure and full gasket seal
- Hold open position, cam allows door to remain open at 90°
- Non-handed...for right and left hand operation
- Contemporary styling
- Mounting holes drilled and countersunk for #10 or M5 flat head screws

