

Safety precautions

This installation manual explains how to install an MDS(Motion Detect Sensor)-KIT to an indoor unit.
Please read this manual thoroughly before installing the MDS-KIT.
(Please refer to appropriate installation for any optional product installation.)



CAUTION

Hazards or unsafe practices that may result in minor personal injury or property damage.



WARNING

- ▶ Hazards or unsafe practices that may result in severe personal injury or death.
 - ▶ Contact a qualified installer or a service center for the installation.
 - ▶ Do not attempt to repair, disassemble, or modify the appliance yourself.
 - Failure to do so may result in product malfunction, electric shock, or fire.
 - So when repairing the product, contact a qualified installer or a service center.
 - ▶ When detaching or disposing of an MDS-KIT, contact a qualified installer or a service center.
 - ▶ Install an MDS-KIT securely in a designated place, using the installation accessories.
 - If the MDS-KIT is not installed securely, the component might fall off and get damaged.
-





Contents

Installing MDS-KIT	3
Accessories	3
The procedure of installation	3
Troubleshooting	4
Using MDS-KIT	5
Turn ON/OFF the MDS-KIT	5
Functions	5
Troubleshooting	5

Installing MDS-KIT

Accessories

- ◆ The following accessories are supplied with the indoor unit.
The type and quantity may differ depending on the specifications.

A'ssy MDS kit(1)	Connection Wires(1)	Cable tie(2)	Installation & User manual(1)
			



- When installing the MDS-KIT, you should use the designated components by Samsung electronics.

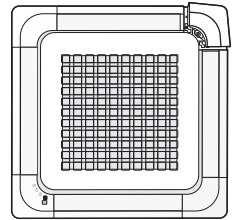
The procedure of installation



- This product should be installed to the panel first. (Before installing the panel to the appliance) If the panel is already installed, detach the panel from the appliance and then install the MDS-KIT to the panel.
- The wired remote controller(MWR-WE10) should be used for MDS-KIT. An undesignated wired or wireless remote controller cannot operate MDS-KIT functions. (Wireless remote controller just can input option code)
- Refer to the indoor unit installation manual for detailed description of option code setting.

1. Detach the corner that is in diagonal direction from the panel display.

- ▶ MDS-KIT cannot be installed into undesignated places.



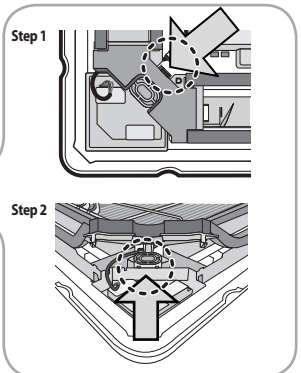
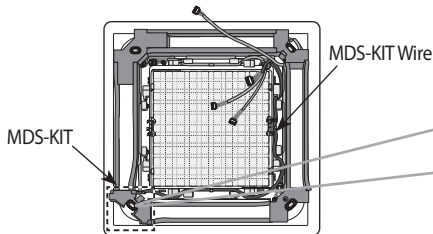
2. Install the MDS-KIT to the corner part of the panel.

- ▶ When positioning wires, use the enclosed cable tie.

Step 1: Push the hook on the cover-back

Step 2: Detach the cover-back in the direction of arrow as shown in the figure.

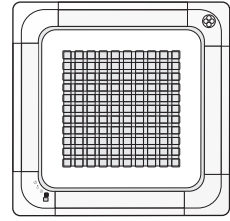
- ✱ As shown in step 2, place the wire under the cover-back.



Installing MDS-KIT

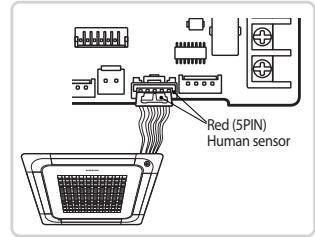
3. Install the panel on which MDS-KIT is installed to an indoor unit.

- ▶ For panel installation, refer to the panel installation manual.
- ▶ Before connecting the wire to the indoor unit PBA, check the color and number of pin on the terminal.



4. Set the MDS-KIT installation option using wired or wireless remote controller.

- ▶ MDS-KIT will not be provided and its setting status will be 'No use' when an indoor unit is released by a factory.
- Therefore, when installing the MDS-KIT privately, set the option for correct operation. (Refer to MDS-KIT user's manual and indoor installation manual)
- ▶ Enter the setting option more than twice.
 - ▶ Reset the indoor unit after entering the option for correct operation.
- Make sure that you should set the option for MDS-KIT function for correct operation.



Troubleshooting

◆ Indoor Unit

Abnormal conditions	LED lamp display				Remarks
	Operation	Defrost	Timer	Filter	
	⏻	*💧	🕒	📊	
MDS-KIT ERROR	◐	X	X	◐	

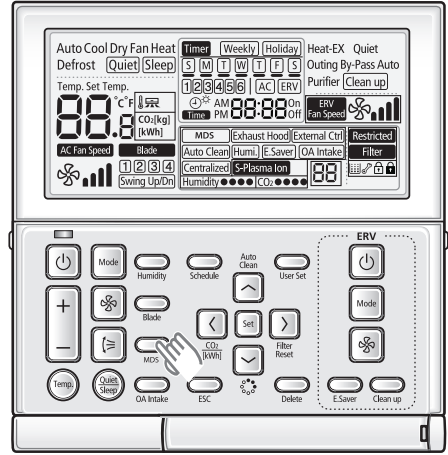
● On ◐ Flickering X Off

※ If you turn off the air conditioner when the LED is flickering, the LED is also turned off.

Using MDS-KIT

Turn ON/OFF the MDS-KIT

- ▶ You can turn ON/OFF the MDS-KIT by only the wired remote controller(MWR-WE10).
- ▶ The wired remote controller should be installed together with the indoor unit.



Functions

1. You can set detail functions by using an installation option code.

(Refer to the installation manual and wired remote controller manual for setting the installation option code.(SEG23))

SEG	SET	MODE	SOFT OFF	HARD OFF	FUNCTION DESCRIPTION
23	0				No Use
	1	STANDARD	20 min.	30 min.	SOFT OFF : turn off the indoor and outdoor unit. But it can restart with motion detection before the HARD OFF. HARD OFF : It cannot restart even if there is motion detection. User should restart the set with wired/wireless remote controller.
	2		40 min.	60 min.	
	3		80 min.	120 min.	
	4		120 min.	180 min.	
	5	PREMIUM	20 min.	30 min.	SOFT OFF and HARD OFF functions are same with standard mode. SAMSUNG's comfort control logics are activated.
	6		40 min.	60 min.	
	7		80 min.	120 min.	
8	120 min.		180 min.		

2. SAMSUNG's comfort control logics

▶ Comfort Flow

MDS prevents the breeze from blowing directly onto the human body by moving up the blade direction when it detects movement.

▶ Comfort Temperature

When the temperature difference between the upper part and lower part of a room is big, the blade direction will be lowered to mix the air and reduce the temperature difference.

▶ Comfort Saving

The set control the setting temperature(max. +2°C for cooling, -2°C for heating) to save the energy consumption by detecting the movement in the room.

Troubleshooting

- ▶ When the MDS-KIT has connection problem or malfunctions, E143 error will occur on the panel(LED display) and wired remote controller.
- ▶ If there is error for MDS-KIT, the indoor and outdoor units normally operate without MDS functions.
- ▶ If error occurs continuously, check the wire connection and contact the service center.



MDS-KIT Installation & User manual

Planet
First

100%
Recycled Paper

This manual is made with 100% recycled paper.

imagine the possibilities

Thank you for purchasing this Samsung product.



ESFI PDGRA DB98-32764A-1

SAMSUNG