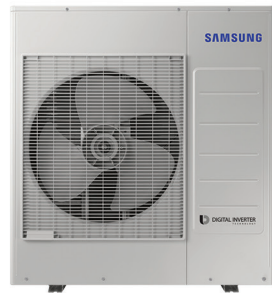


## JXH20S3B / AJ020BXS3CH/AA



**Capacity**  
 Cooling (standard) – 21,000  
 Cooling (max.) – 21,000  
 Heating (standard) – 22,000  
 Heating (max.) – 22,000

**Pipe Length**  
 Max. Single Line Set Length – 82 ft.  
 Max. Total Line Set Length – 164 ft.  
 Max. Vertical Separation (ODU to IDU) – 49 ft.  
 Max. Vertical Separation (IDU to IDU) – 25 ft.

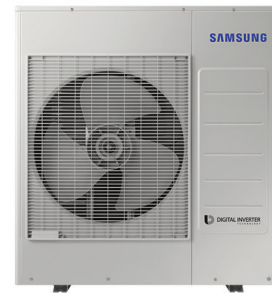
Only 1 X MPAH (AC0\*\*BNZDCH/AA) OR 1 X Duct S (AJ0\*\*BNHDCH/AA) unit can be connected to a single FJM outdoor unit.

Applies to outdoor units manufactured after 4/30/2022.  
 \*Compatible combination that includes 1 X MPAH (AC0\*\*BNZDCH/AA) OR 1 X Duct S (AJ0\*\*BNHDCH/AA) unit.



Unit Qty.	Indoor Nominal Capacity (K Btu/h)			Duct S / MPAH Compatibility*		Connected Capacity (K Btu/h)
	A	B	C	Duct S	MPAH	
2	7	7				14
	7	9		•		16
	7	12		•	•	19
	7	15				22
	9	9		•		18
	9	12		•	•	21
	9	15				24
	12	12				24
3	7	7	7			21
	7	7	9			23
	7	7	12			26
	7	9	9			25
	9	9	9			27

## JXH24S4B / AJ024BXS4CH/AA



**Capacity**  
 Cooling (standard) – 25,000  
 Cooling (max.) – 25,000  
 Heating (standard) – 25,000  
 Heating (max.) – 25,000

**Pipe Length**  
 Max. Single Line Set Length – 82 ft.  
 Max. Total Line Set Length – 230 ft.  
 Max. Vertical Separation (ODU to IDU) – 49 ft.  
 Max. Vertical Separation (IDU to IDU) – 25 ft.

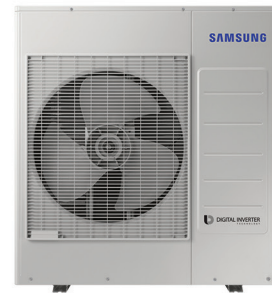
Only 1 X MPAH (AC0\*\*BNZDCH/AA) OR 1 X Duct S (AJ0\*\*BNHDCH/AA) unit can be connected to a single FJM outdoor unit.

Applies to outdoor units manufactured after 4/30/2022.  
 \*Compatible combination that includes 1 X MPAH (AC0\*\*BNZDCH/AA) OR 1 X Duct S (AJ0\*\*BNHDCH/AA) unit.



Unit Qty.	Indoor Nominal Capacity (K Btu/h)				Duct S / MPAH Compatibility*		Connected Capacity (K Btu/h)
	A	B	C	D	Duct S	MPAH	
2	7	7					14
	7	9			•		16
	7	12			•	•	19
	7	15			•		22
	7	18					25
	9	9			•		18
	9	12			•	•	21
	9	15			•		24
	9	18					27
	12	12			•	•	24
	12	15					27
	12	18					30
	15	15					30
	3	7	7	7			
7		7	9		•		23
7		7	12				26
7		7	15				29
7		7	18				32
7		9	9				25
7		9	12				28
7		9	15				31
7		12	12				31
9		9	9				27
4	7	7	7	7			28
	7	7	7	9			30
	7	7	9	9			32

## JXH30S4B / AJ030BXS4CH/AA



**Capacity**  
 Cooling (standard) – 28,400  
 Cooling (max.) – 28,400  
 Heating (standard) – 28,600  
 Heating (max.) – 28,600

**Pipe Length**  
 Max. Single Line Set Length – 82 ft.  
 Max. Total Line Set Length – 230 ft.  
 Max. Vertical Separation (ODU to IDU) – 49 ft.  
 Max. Vertical Separation (IDU to IDU) – 25 ft.

Only 1 X MPAH (AC0\*\*BNZDCH/AA) OR 1 X Duct S (AJ0\*\*BNHDCH/AA) unit can be connected to a single FJM outdoor unit.

Applies to outdoor units manufactured after 4/30/2022.  
 \*Compatible combination that includes 1 X MPAH (AC0\*\*BNZDCH/AA) OR 1 X Duct S (AJ0\*\*BNHDCH/AA) unit.



Unit Qty.	Indoor Nominal Capacity (K Btu/h)				Duct S / MPAH Compatibility*		Connected Capacity (K Btu/h)	
	A	B	C	D	Duct S	MPAH		
2	7	7					14	
	7	9			•		16	
	7	12			•	•	19	
	7	15			•		22	
	7	18					25	
	9	9			•		18	
	9	12			•	•	21	
	9	15			•		24	
	9	18					27	
	12	12			•	•	24	
	12	15			•		27	
	12	18			•	•	30	
	12	24					33	
	15	15			•		30	
	15	18					33	
	15	24					39	
	18	18					36	
	3	7	7	7				21
		7	7	9		•		23
		7	7	12		•	•	26
7		7	15		•		29	
7		7	18				32	
7		9	9		•	•	25	
7		9	12		•	•	28	
7		9	15				31	
7		12	12				31	
9		9	9				27	
9		9	12				30	
9		9	15				33	
9		9	18				36	

## JXH30S4B / AJ030BXS4CH/AA (continued)

Unit Qty.	Indoor Nominal Capacity (K Btu/h)				Duct S / MPAH Compatibility*		Connected Capacity (K Btu/h)
	A	B	C	D	Duct S	MPAH	
3	9	12	12				33
	9	12	15				36
	9	12	18				39
	12	12	12				36
	12	12	15				39
4	7	7	7	7			28
	7	7	7	9			30
	7	7	7	12			33
	7	7	7	15			36
	7	7	7	18			39
	7	7	9	9			32
	7	7	9	12			35
	7	7	9	15			38
	7	7	12	12			38
	7	9	9	9			34
	7	9	9	12			37
	7	9	9	15			40
	7	9	12	12			40
	9	9	9	9			36
	9	9	9	12			39

### JXH36S4B / AJ036BXS4CH/AA



**Capacity**  
 Cooling (standard) – 34,000  
 Cooling (max.) – 39,600  
 Heating (standard) – 36,600  
 Heating (max.) – 36,600

**Pipe Length**  
 Max. Single Line Set Length – 82 ft.  
 Max. Total Line Set Length – 230 ft.  
 Max. Vertical Separation (ODU to IDU) – 49 ft.  
 Max. Vertical Separation (IDU to IDU) – 25 ft.

Only 1 X MPAH (AC0\*\*BNZDCH/AA) OR 1 X Duct S (AJ0\*\*BNHDCH/AA) unit can be connected to a single FJM outdoor unit.

Applies to outdoor units manufactured after 4/30/2022.

\*Compatible combination that includes 1 X MPAH (AC0\*\*BNZDCH/AA) OR 1 X Duct S (AJ0\*\*BNHDCH/AA) unit.



Unit Qty.	Indoor Nominal Capacity (K Btu/h)				Duct S / MPAH Compatibility*		Connected Capacity (K Btu/h)
	A	B	C	D	Duct S	MPAH	
2	7	7					14
	7	9			•		16
	7	12			•	•	19
	7	15			•		22
	7	18			•	•	25
	7	24			•		31
	9	9			•		18
	9	12			•	•	21
	9	15			•		24
	9	18			•	•	27
	9	24			•		33
	12	12			•	•	24
	12	15			•		27
	12	18			•	•	30
	12	24			•		36
	15	15			•		30
15	18			•	•	33	
15	24					39	
18	18			•	•	36	
18	24					42	
24	24					48	
3	7	7	7				21
	7	7	9		•		23
	7	7	12		•	•	26
	7	7	15		•		29
	7	7	18		•	•	32
	7	7	24				38
	7	9	9		•		25
	7	9	12		•	•	28
	7	9	15		•		31
	7	9	18		•	•	34
7	9	24				40	
7	12	12		•	•	31	
7	12	15		•		34	

### JXH36S4B / AJ036BXS4CH/AA (continued)

Unit Qty.	Indoor Nominal Capacity (K Btu/h)				Duct S / MPAH Compatibility*		Connected Capacity (K Btu/h)
	A	B	C	D	Duct S	MPAH	
3	7	12	18				37
	7	12	24				43
	7	15	15				37
	7	15	18				40
	7	15	24				46
	7	18	18				43
	9	9	9		•		27
	9	9	12		•	•	30
	9	9	15		•		33
	9	9	18		•	•	36
	9	9	24				42
	9	12	12		•	•	33
	9	12	15		•	•	36
	9	12	18				39
	9	12	24				45
	9	15	15				39
	9	15	18				42
	9	15	24				48
	9	18	18				45
	12	12	12		•	•	36
	12	12	15				39
	12	12	18				42
	12	12	24				48
	12	15	15				42
12	15	18				45	
12	18	18				48	
15	15	15				45	
15	15	18				48	
4	7	7	7	7			28
	7	7	7	9			30
	7	7	7	12			33
	7	7	7	15			36
	7	7	7	18			39
	7	7	7	24			45
	7	7	9	9			32
	7	7	9	12			35
	7	7	9	15			38
	7	7	9	18			41
	7	7	9	24			47
	7	7	12	12			38
	7	7	12	15			41
	7	7	12	18			44
	7	7	15	15			44
	7	7	15	18			47
	7	9	9	9			34
	7	9	9	12			37
	7	9	9	15			40
	7	9	9	18			43
7	9	12	12			40	
7	9	12	15			43	
7	9	12	18			46	
7	9	15	15			46	

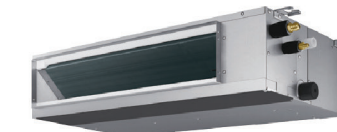
### JXH36S4B / AJ036BXS4CH/AA (continued)

Unit Qty.	Indoor Nominal Capacity (K Btu/h)				Duct S / MPAH Compatibility*		Connected Capacity (K Btu/h)
	A	B	C	D	Duct S	MPAH	
4	7	12	12	12			43
	7	12	12	15			46
	9	9	9	9			36
	9	9	9	12			39
	9	9	9	15			42
	9	9	9	18			45
	9	9	12	12			42
	9	9	12	15			45
	9	9	12	18			48
	9	9	15	15			48
	9	12	12	12			45
	9	12	12	15			48
	12	12	12	12			48

### Compatible Indoor Units



**Console**  
9K / 12K / 15K / 18K



**Slim Duct**  
9K / 12K / 18K



**Multi-Position Air Handler**  
12K / 18K / 24K



**WindFree™ Mini 4-Way Cassette**  
9K / 12K / 18K



**WindFree™ 1-Way Cassette**  
9K / 12K



**WindFree™ 3.0**  
7K / 9K / 12K / 15K / 18K / 24K



**WindFree™ 3.0e**  
7K / 9K / 12K / 15K / 18K / 24K



**WindFree™ 3.0i**  
7K / 9K / 12K / 15K / 18K / 24K



**Duct S**  
9K / 12K / 15K / 18K

Capacities shown in Btu/h

\*The WindFree™ unit delivers an air current that is under 0.15 m/s while in WindFree™ mode. Air velocity that is below 0.15 m/s is considered "still air" as defined by ASHRAE 55-2013 (American Society of Heating, Refrigerating, and Air-Conditioning Engineers).

Refer to supporting technical data book (TDB) for indoor unit compatibility available at SamsungHVAC.com.