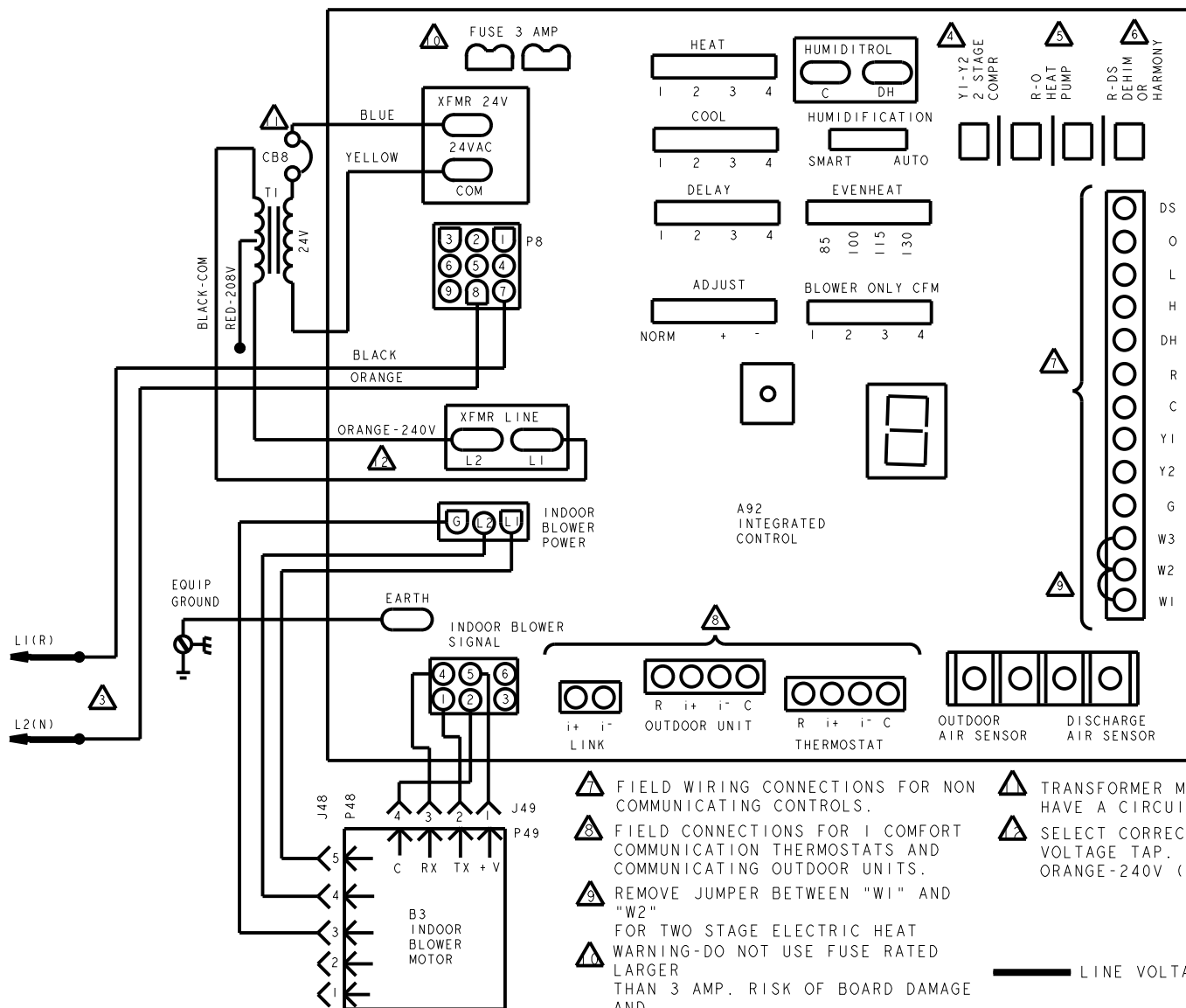


DESCRIPTION	
KEY	COMPONENT
A92	CONTROL - INTEGRATED
B3	MOTOR-BLOWER
J48	JACK-MOTOR, VARIABLE SPEED
J49	JACK-MOTOR, VARIABLE SPEED
P8	PLUG-ELECTRIC HEAT
P48	PLUG-MOTOR, VARIABLE SPEED
P49	PLUG-MOTOR, VARIABLE SPEED
T1	TRANSFORMER-CONTROL



RECOMMENDED SPEED TAP SELECTION					
MODEL	BLOWER COIL	COOL		HEAT	
		CONDENSING UNIT	HEAT PUMP	CONDENSING UNIT WITH ELECTRIC HEAT ONLY	HEAT PUMP WITH ELECTRIC HEAT ONLY
BCE4	24, 30, 36	PIN #3	PIN #3	PIN #4	PIN #4
	48	PIN #2	PIN #2	PIN #1	PIN #1
	60	PIN #3	PIN #3	PIN #1	PIN #1
BCE7	24, 30, 36, 42	PIN #3	PIN #3	PIN #3	PIN #3
	48	PIN #2	PIN #2	PIN #2	PIN #2
	60	PIN #3	PIN #3	PIN #3	PIN #3



⚠ REFER TO FACTORY BLOWER SPEED TAP SELECTION CHART ON UNIT FOR BLOWER SPEED INFORMATION.

⚠ NEC/CEC CLASS 2 3VA

⚠ USE COPPER CONDUCTORS ONLY. REFER TO UNIT RATING PLATE FOR MINIMUM CIRCUIT AMPACITY AND MAXIMUM OVERCURRENT PROTECTION SIZE

⚠ CLIP LINK "Y1" TO "Y2" FOR TWO STAGE UNIT

⚠ CLIP LINK "R" TO "O" WHEN HEAT PUMP IS USED

⚠ CLIP LINK BETWEEN "R" AND "DS" WHEN DEHUMIDIFICATION CONTROL IS USED

⚠ FIELD WIRING CONNECTIONS FOR NON COMMUNICATING CONTROLS.

⚠ FIELD CONNECTIONS FOR 1 COMFORT COMMUNICATION THERMOSTATS AND COMMUNICATING OUTDOOR UNITS.

⚠ REMOVE JUMPER BETWEEN "W1" AND "W2"

⚠ FOR TWO STAGE ELECTRIC HEAT WARNING-DO NOT USE FUSE RATED LARGER THAN 3 AMP. RISK OF BOARD DAMAGE AND FIRE MAY RESULT.

⚠ TRANSFORMER MAY OR MAY NOT HAVE A CIRCUIT BREAKER

⚠ SELECT CORRECT LINE VOLTAGE TAP. RED-280V, ORANGE-240V (FACTORY)

— LINE VOLTAGE FIELD WIRING

COILS-BLOWER COIL UNITS

BCE4MS AND BCE7SM

Supersedes

11/14

Form No.  
537793-02