

Job Name
Purchaser
Submitted to
Unit Designation

Location
Engineer
Reference
Approval
Construction
Schedule #

Specifications			
Model	Indoor Unit Model Number (US Code)		AC036BNTDCH/AA (CNH36TDB)
	Outdoor Unit Model Number (US Code)		AC036BXADCH/AA (CXH36ADB)
Performance ¹	Nominal Capacity	Cooling / Heating (Btu/h)	36,000 / 40,000
	Capacity Range	Cooling (Btu/h)	11,000 - 39,000
		Heating (Btu/h)	9,500 - 47,000
	SEER / EER		18.6 / 9.5
	COP (nominal heating)		2.6
	HSPF		10.1
AHRI Certification Number			207465463
Power	Voltage	ø / V / Hz	1 / 208-230 / 60
	Working Voltage Range (VAC)		176 - 254 (max. 3% deviation from each)
	Operating Current (min. / std. / max.)	Cooling (A)	5.0 / 16.8 / 19.1
		Heating (A)	3.0 / 20.0 / 24.0
	Max. Breaker	Amps	35
	Min. Circuit Ampacity (A)	21.4	
Dimensions	W X H X D (in.)	Indoor Unit	50 3/8 X 9 15/16X 13 9/16
		Outdoor Unit	37 X 47 5/8 X 13
	Weight (lbs.)	Indoor Unit	40.8
		Outdoor Unit	189.6
Sound Pressure Level	Indoor Unit dB(A)	L / M / H	46 / 48 / 51
	Outdoor Unit dB(A)	Cooling / Heating (high)	52 / 54
Operating Temperatures	Outdoor	Cooling	23 ~122°F (-5~ 50°C) 0~122°F (-18~ 50°C) W/ Baffle
		Heating	-4~75°F (-20 ~ 24°C)
	Indoor	Cooling	61 ~90°F (16 ~32°C)
		Heating	T≤ 80°F (27°C)
Pipe Connections	Indoor & Outdoor	High side (flare)	3/8"
		Low side (flare)	5/8"
	Maximum (ft.)		246
	Maximum Vertical Separation (ft.)		98.4
Condensate Connection			1 1/4 O.D X 1 I. D
Refrigerant	Type		R410A
	Control Method		Electronic Expansion Valve
	Factory Charge	lbs.	6.39
	Charged for		24.6 ft
Additional Refrigerant			0.11 oz/ft over 24.6 ft
Compressor	Manufacturer		Samsung
	Type		Inverter Driven, Twin BLDC Rotary
	RLA	Amps	14.7
Evaporator Fan	Type		BLDC (1) With Crossflow Fan (2)
	Air Volume	CFM (L/M/H)	699 / 752 / 830
	Output (W) / FLA (A)		58 W / 0.51 A
Condenser Fan	Motor		BLDC With Axial Type Fan (2)
	FLA / Watts / CFM (max.)		1.25 A / 125 W / 3,532 CFM
Safety	Certifications		ETL (UL 1995)
	Devices: PCB fuses, indoor unit terminal block thermal fuse, current transformer, over-voltage protection, crankcase heating, temperature limit protection logic, compressor overload sensing		

¹ Certified in accordance with the AHRI Unitary Small Air-Source Heat Pumps (USHP) Certification Program which is based on the latest edition of AHRI Standard 210/240

Samsung HVAC maintains a policy of ongoing development; specifications are subject to change without notice

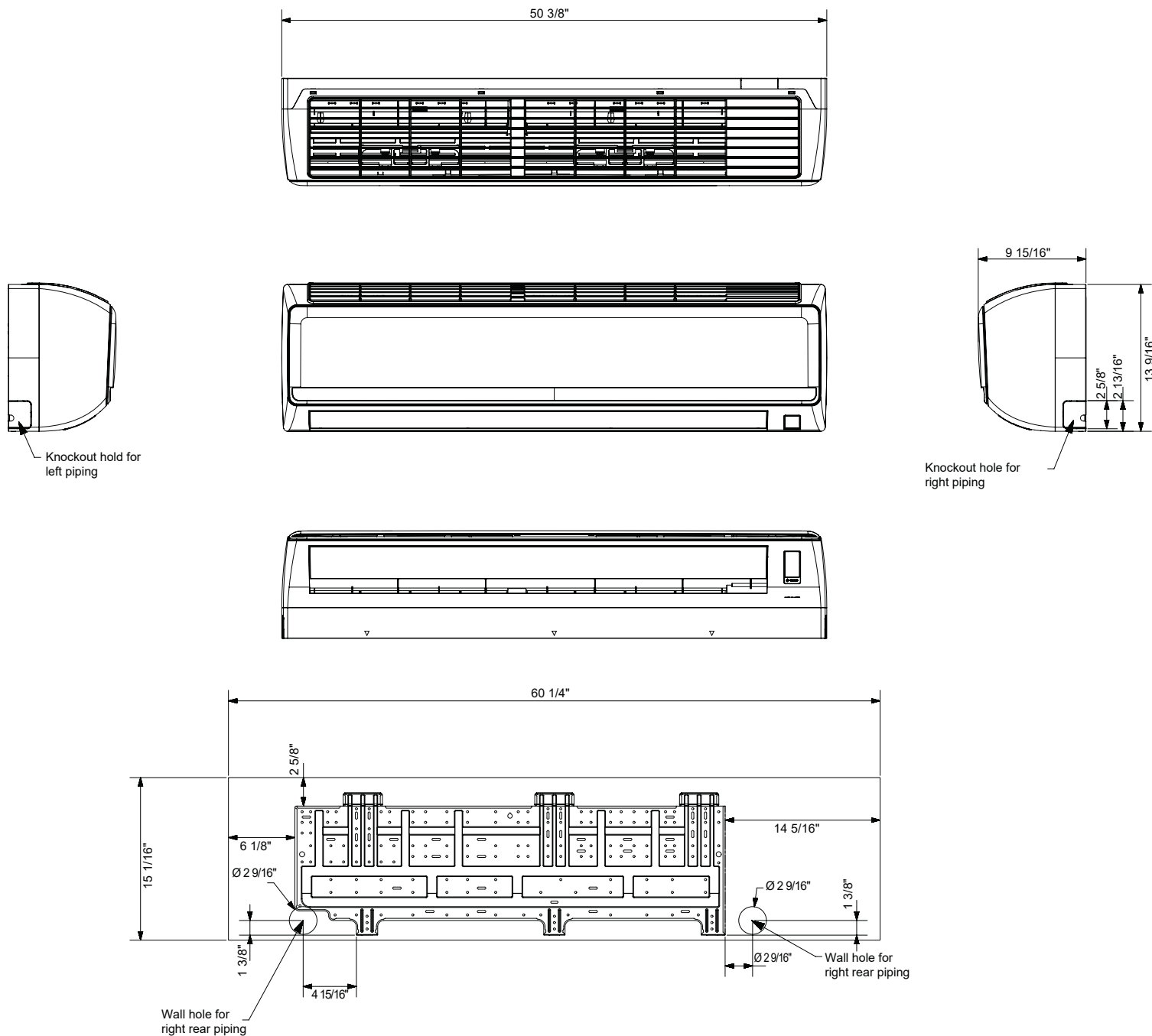


- General Information**
 - The outdoor unit shall supply power to indoor unit via 14 AWG X 3 power wire
 - High-voltage terminal block temperature sensor to disable unit in the event of power connection overheating
 - Auto-restart after power loss
 - Soft-start compressor minimizing current inrush
 - All heat exchangers shall be mechanically bonded aluminum fin to copper tube
 - The condensing unit heat exchanger salt spray test method: ASTM-B117-18 - the heat exchanger showed no unusual rust or corrosion development to 2,280 hours.
- Option settings**
 - The outdoor unit shall have snow accumulation prevention option setting to prevent snow drifting against an idle outdoor unit.
 - Night-time Quiet Mode: reduction of operational sound during (*automatic or manual activation*)
 - Emergency Temperature Output (ETO) function: when indoor unit is in error status or when room temperature exceeds configurable temperature level, the system outputs a signal to an external source, e.g., backup system, building management system, alert device (ex: status light, warning lamp, buzzer)
 - System can be configured as heating/cooling, cooling only, or heating only via outdoor unit option setting
 - Maximum Current Control configurable from 50% - 100% via outdoor unit, wired controller, or central controls
- Indoor Fan**
 - Indoor fan is a single crossflow type
 - Three fan speed settings and auto setting
 - Washable filter as standard
- Construction**
 - Outdoor unit: Galvanized steel with a baked-on powder coated finish for durability
 - Indoor unit: UL94 V0 with a galvanized steel mounting plate
- Controls**
 - Control wiring shall be 2 X 16 AWG
 - Wireless controller included as standard
 - Wired controllers must be purchased separately
 - Dual set temperature support when connected to MWR-WG00UN Advanced Wired Controller or central control options
 - No additional interface modules/adapters are required when connecting to Samsung central control options
 - The unit shall be operated via a wireless or wired remote control with DDC type signal
- Refrigerant System**
 - The compressor shall be hermetically sealed, inverter-controlled Twin BLDC rotary type
 - Refrigerant flow shall be controlled by an electronic expansion valve at outdoor unit
- Warranty**

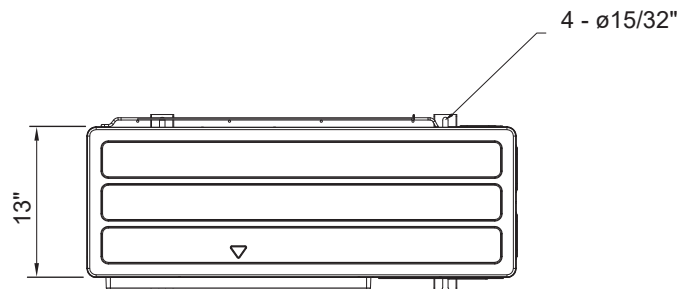
10 years compressor, 10 years parts, 1-year limited labor (conditions apply)

Optional Accessories

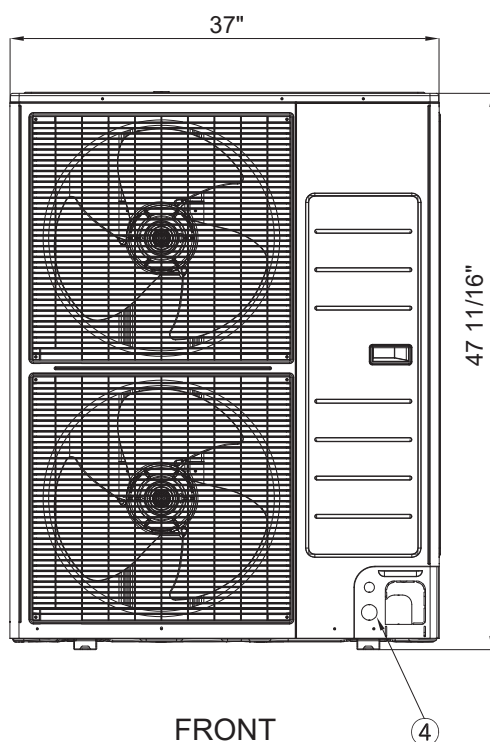
Wired Controller	Advanced	MWR-WG00UN
	Touchscreen	MWR-SH11UN
Thermostat Adaptor (for connection to a standard 24VAC thermostat)		MIM-A60UN
Wi-Fi adapter		MIM-H04UN
External Temperature Sensor		MRW-TA
External Contact Control		MIM-B14
Wall Bracket (for outdoor unit)		CKN-250
Wind Baffles	Front	WBF-1M2
	Back	WBB-2M-B
Hail Guard		TBD
Line Sets - insulated and flared, interconnect cables included		25' - ILS-2510
		50' - ILS-5010



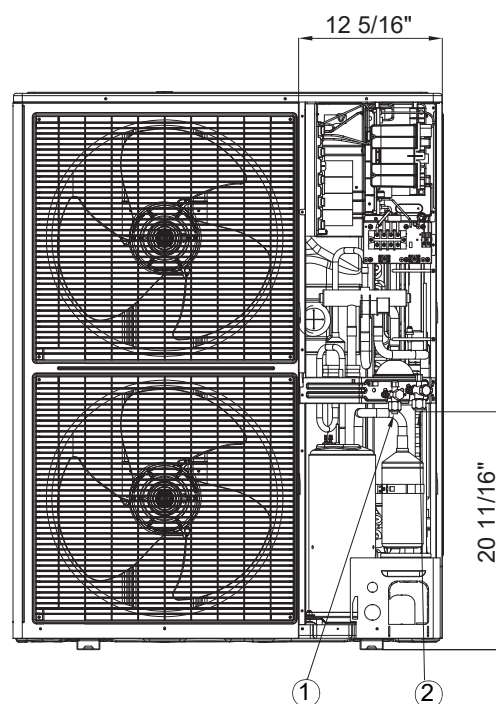
No.	Name	Description
1	Liquid pipe connection	3/8"
2	Gas pipe connection	5/8"
3	Drain pipe connection	1 1/16"
4	Power supply & Communication wiring conduit	-



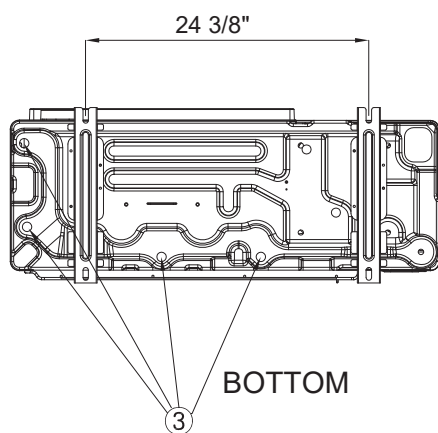
TOP



FRONT



FRONT WITHOUT SERVICE COVER



BOTTOM

No.	Name	Description
1	Refrigerant liquid pipe	3/8
2	Refrigerant gas pipe	5/8
3	Drain hole	Connect with provided drain plug
4	Power and communication conduit openings	--