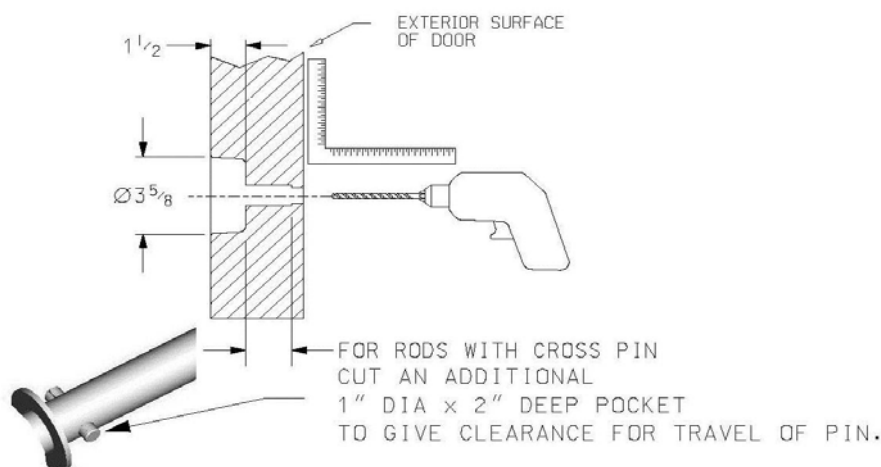


489 Narrow Recessed Inside Release Handle

Part Number: 10489A

1. Starting at the door exterior surface, drill a $3/4"$ dia. (19.1mm) through hole aligned with ISR feature on latch. Be certain to drill square to the door face as shown in **Fig. 1**.
2. Moving to the interior surface of the door, cut a $3-5/8"$ dia. (92mm), $1-1/2"$ (38.1mm) deep hole, located on center of the $3/4"$ through hole.

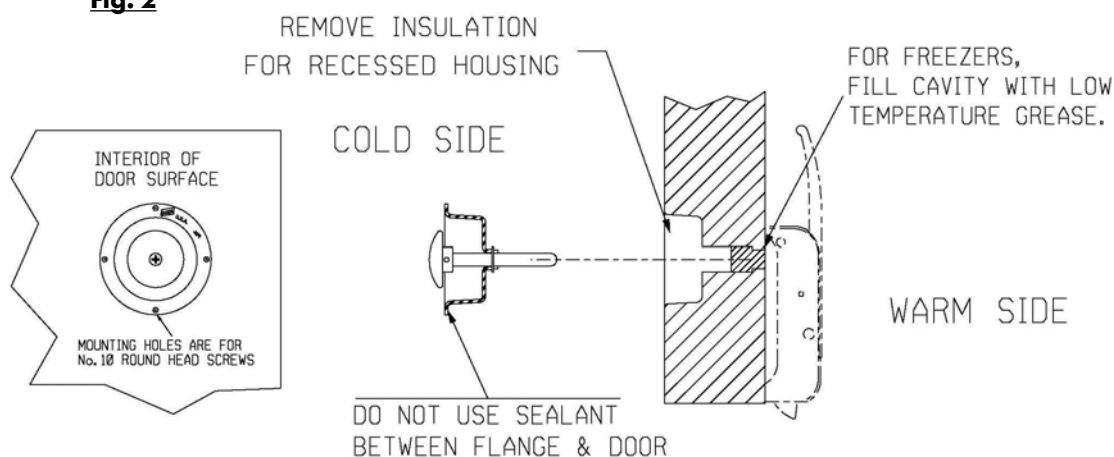
Fig. 1



3. Hollow out the insulation within the cut-out area to the $1-1/2"$ depth. Hole will accept recessed housing as shown below. Check fit by placing recessed housing in large hole on interior side of door aligning center hole with $3/4"$ through hole. Push rod must move freely through insulation.

For Freezers: Fill warm side cavity with low temperature grease to limit air infiltration and ice formation.

Fig. 2



4. Mount housing to door with (4) four #10 (5.0mm) round head screws.

5. Test to assure release function.

WARNING: Function is critical. Entrapment in freezer can cause severe injury or death.